



### 3 Banool Road FAIRHAVEN VIC

5 3 2

Offers required by 15 November 2015

Set on large 1441sqm (app) native allotment, this substantial 5 bedroom residence is in a sheltered position, capturing all the morning sun and offers direct access to the Fairhaven beach and surf club. The residence is presented in immaculate condition and enjoys many user friendly features. The large open plan living area on the upper level is enhanced by the enormous east facing sundeck complete with a spa at one end. It is not difficult to imagine strolling back from a great day at the beach and heading straight to the spa with a cool drink. The residence is very practical with enough room to accommodate a large family or guests, with the semi self-contained unit on the lower level being a very useful feature. The size of the

**Type** : House  
**Price** : \$ 940,000  
**Land Size** : 1441 sqm  
**View** : <https://www.greatoceanproperties.com.au/2424804>

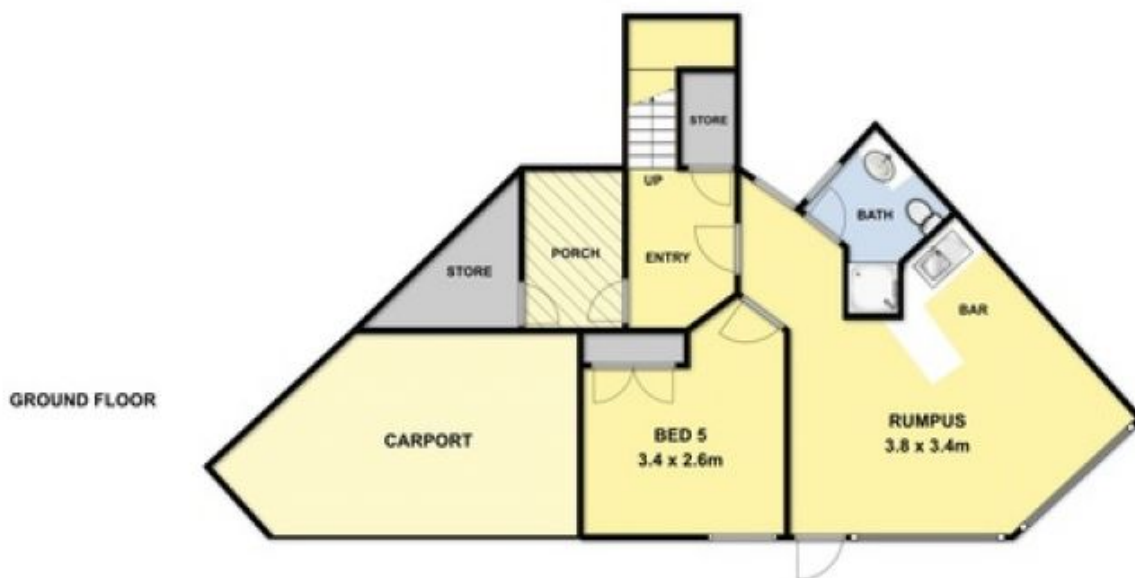
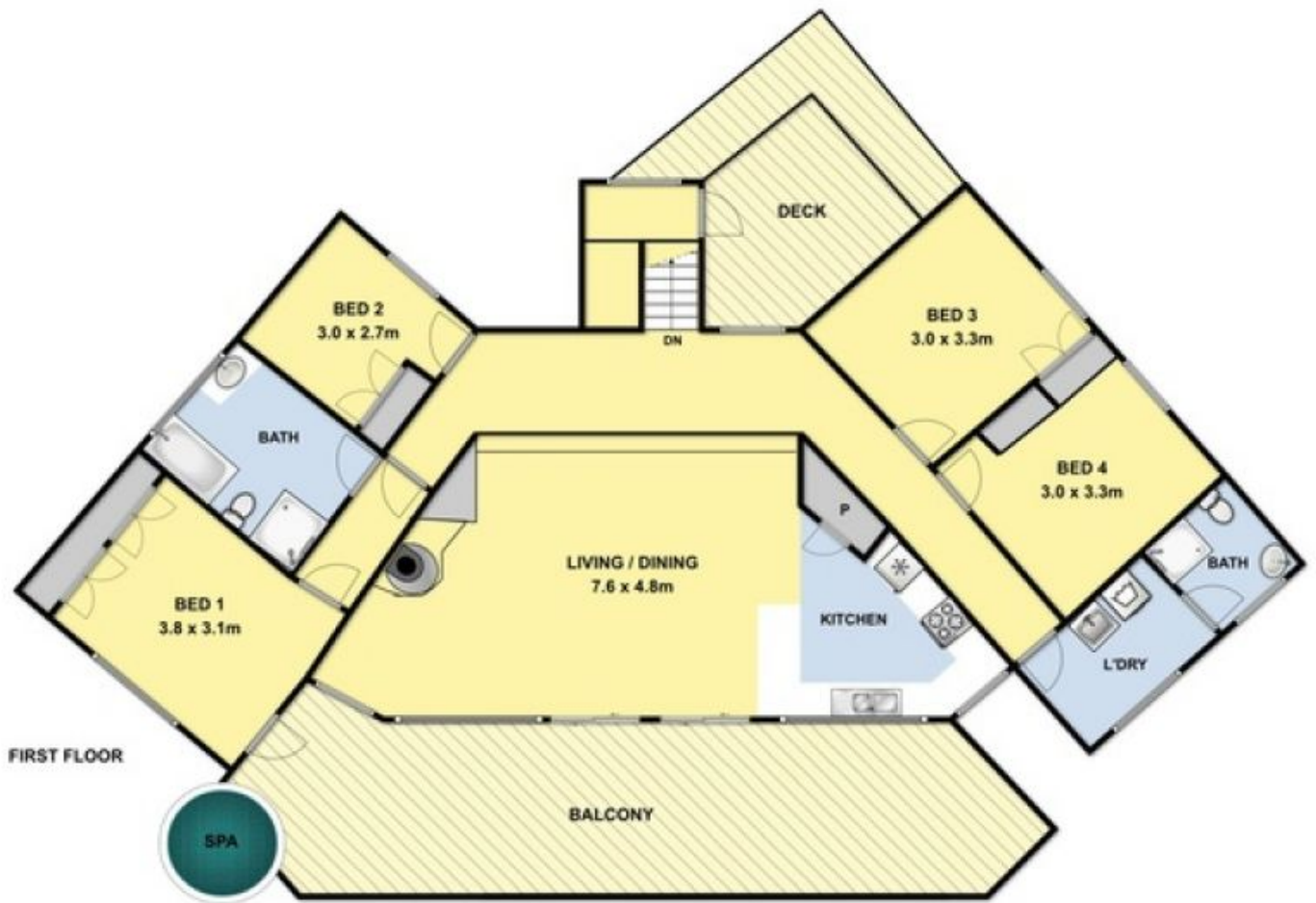


**Marty Maher**  
0352200000



**Mim Atkinson**  
0352200000

[For full version visit the website](https://www.greatoceanproperties.com.au)



THIS FLOOR PLAN IS A SKETCH ALL DATA SHOWN IS GENERAL ONLY NB: ALL DIMENSIONS STATED ARE APPROXIMATE ONLY AND SHOULD NOT BE TAKEN AS DEFINITE