



3/25 Fernald Avenue ANGLESEA VIC

4 3 2

Modern, spacious, light filled and striking is this impressive two storey four bedroom coastal family retreat. Centrally located in a quiet Anglesea location and all within an easy stroll to the river, main beach, village and local cafes. Showcasing a clever design focusing on space and functionality. This property is sure to impress with its open plan design and light filled living zones which flow effortlessly onto the expansive north facing sundeck, surrounded by native tress in the tranquil bush setting. Downstairs offers a modern kitchen/dining and living area with two spacious bedrooms each with their own ensuite, while upstairs offers a further two large bedrooms, central bathroom and a second living area. Outdoor living is easy with the private and fully fenced low

Type : House
Land Size : 486 sqm
View : <https://www.greateoceanproperties.com.au/2528736>

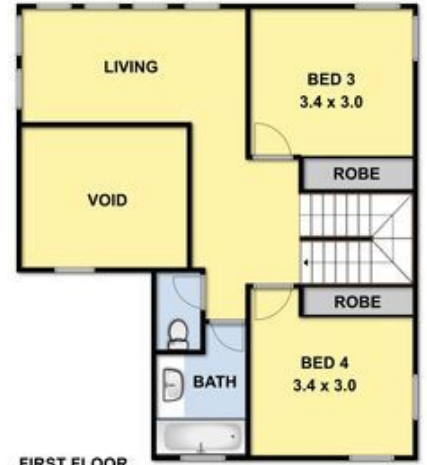


Marty Maher
0352200000

[For full version visit the website](https://www.greateoceanproperties.com.au)



GROUND FLOOR



FIRST FLOOR

THIS FLOOR PLAN IS A SKETCH-ALL DATA SHOWN IS GENERAL ONLY-NO ALL DIMENSIONS STATED ARE APPROXIMATE ONLY AND SHOULD NOT BE TAKEN AS DEFINITE