



39 She Oak Crescent FAIRHAVEN VIC

4 3 2

The elevated position of this contemporary 4BR beach house provides a 180 degree outlook that includes the Great Otway National Park, Bass Straight and even the Split Point Lighthouse at Aireys Inlet. Set on 1000sqm (app), the substantial double storey dwelling includes a large living area on each level plus accommodation in 4 very large bedrooms. There are 3 bathrooms, made up of a main bathroom downstairs, with both an ensuite servicing the main bedroom and a powder room upstairs. The open plan living area completely opens up via concertina doors onto the north east facing, main sundeck. This not only provides an excellent space for indoor outdoor entertaining, it also captures all the morning sun, while facing away from the prevailing winds. This is a very practical property in terms of the design and low maintenance construction.

Type : House
Price : \$ 820,000
Land Size : 1000 sqm
View : <https://www.greatoceanproperties.com.au/3260273>



Marty Maher
0352200000

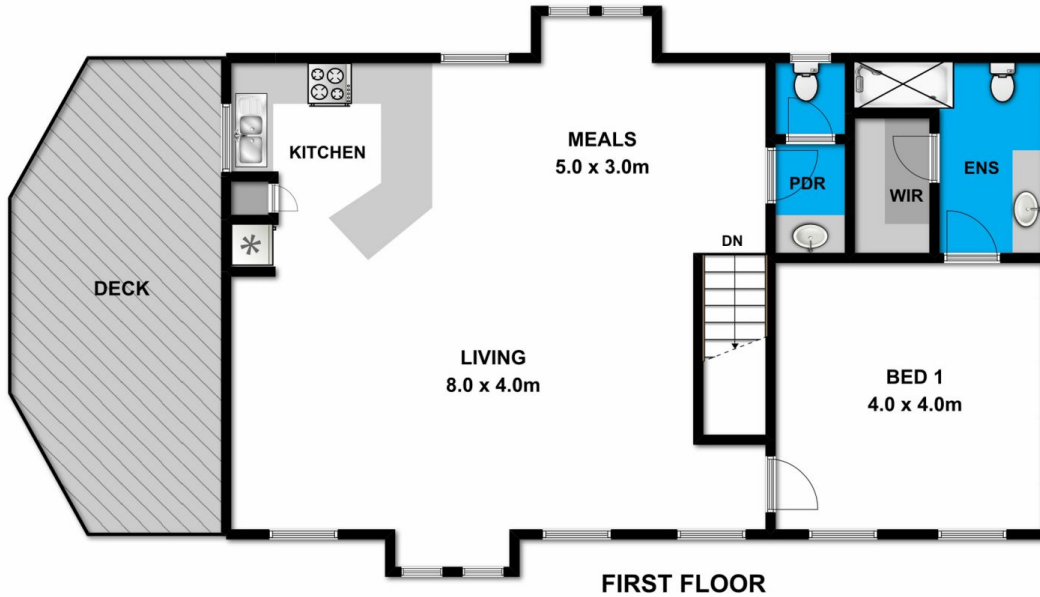
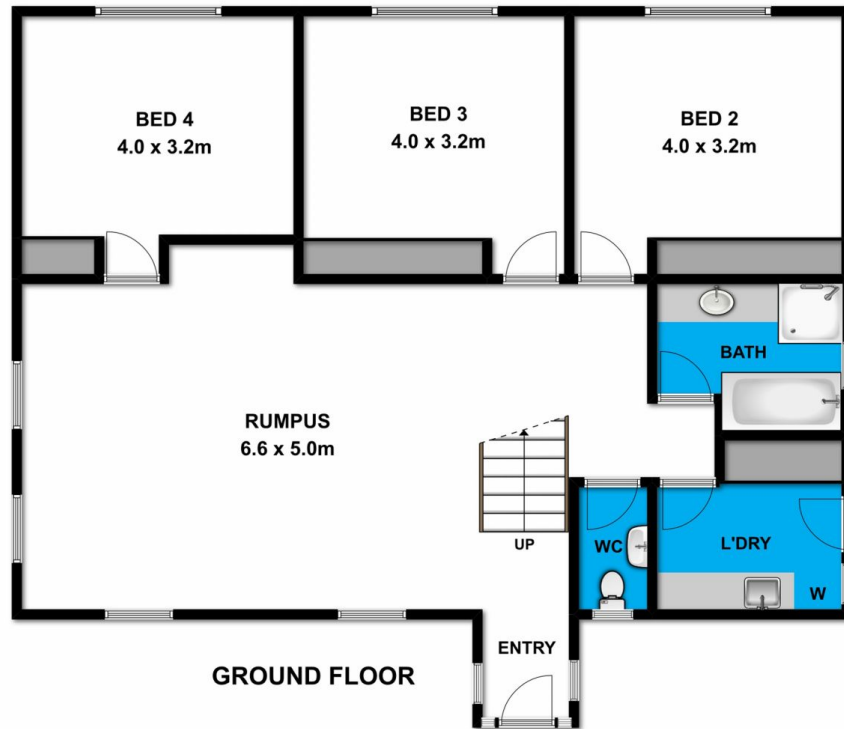


Mim Atkinson
0352200000

[For full version visit the website](https://www.greatoceanproperties.com.au)

<https://www.greatoceanproperties.com.au>

5220 0000



Whilst bwrn.com.au has made every attempt to ensure the accuracy of the floor plan contained here, measurements are approximate and no responsibility is taken for any error, omission, or mis-statement. This plan is for illustrative purposes only.

