



## 165 Tuxion Road APOLLO BAY VIC

10 7 7

A place of peace, utter beauty and spectacular ocean views, this five-bedroom brick residence designed by architect John Pizzey set on 20 acres (approx.) seemingly floats above the hills and gum trees with panoramic views across the countryside, Apollo Bay and harbour to Bass Strait. Within 5 minutes of Apollo Bay's beach, shops and cafes, this is a truly unique offering. Not only does it include a beautifully designed home, but 5 spectacular luxury studio villas with a long established reputation as one Great Ocean Road's most exclusive and romantic holiday accommodation destinations for couples, a favourite for honeymoons, anniversaries and wedding proposals.

A wonderful family home for entertaining, relaxing living and outdoor adventures, the never-to-be-lost view is drawn

**Type** : House

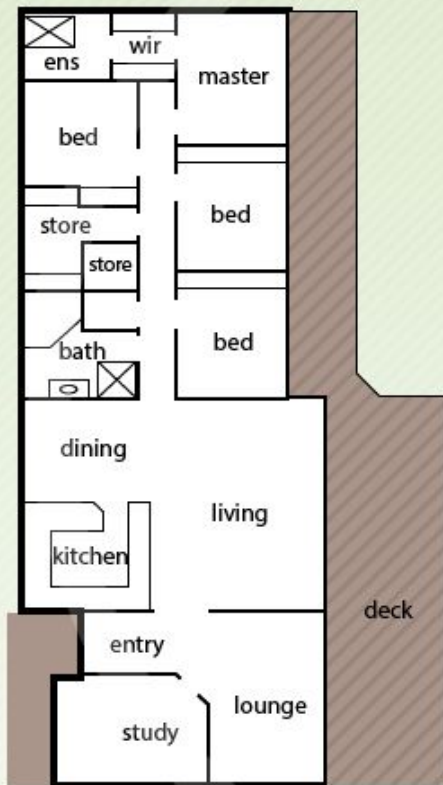
**Price** : \$ 2,520,000

**View** : <https://www.greatoceanproperties.com.au/3411794>

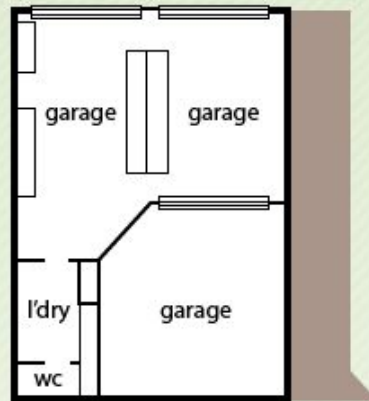


**Gary Van Someren**  
0418550049

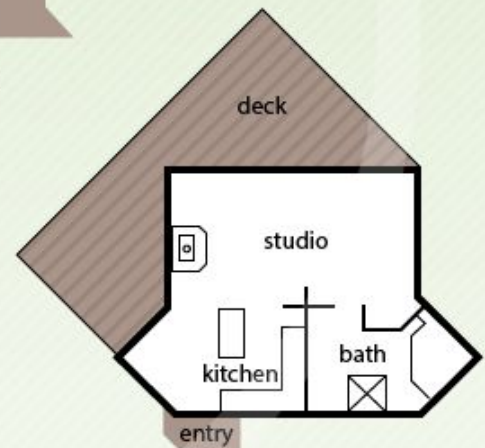
[For full version visit the website](https://www.greatoceanproperties.com.au)



**upper floor - main house**



**lower floor - main house**



**typical floorplan - cottages**



greatocean**properties**