



## 20 Great Ocean Road AIREYS INLET VIC

3 2 2

This well positioned property is walking distance to all your needs. Recently reclad and painted, this three bedroom, two story residence will definitely surprise you with its presentation and configuration. Both levels are self contained, which is ideal for both family and/or rental. Set on a pretty 757 sqm (app) allotment, the residence is in a very convenient location on the ocean side of the Great Ocean Road. Amenities within close proximity include shops, café, hotels, tennis courts and the beautiful Sandy Gully Beach. There are some filtered ocean views throughout the picturesque mature eucalypts. Inspection will surprise, especially for this price point.

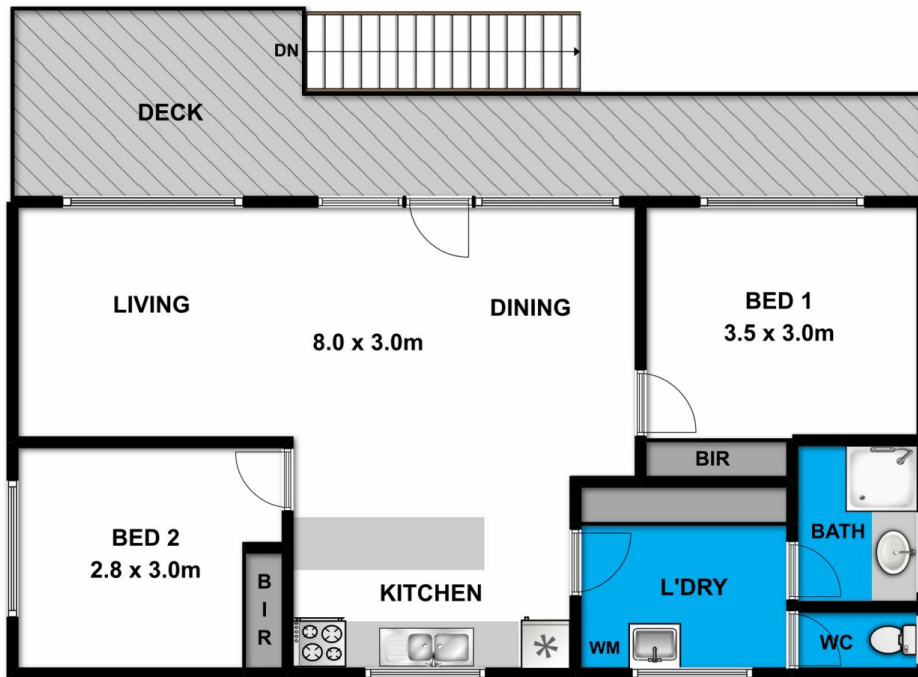
**Type** : House  
**Land Size** : 757 sqm  
**View** : <https://www.greatoceanproperties.com.au/3508756>



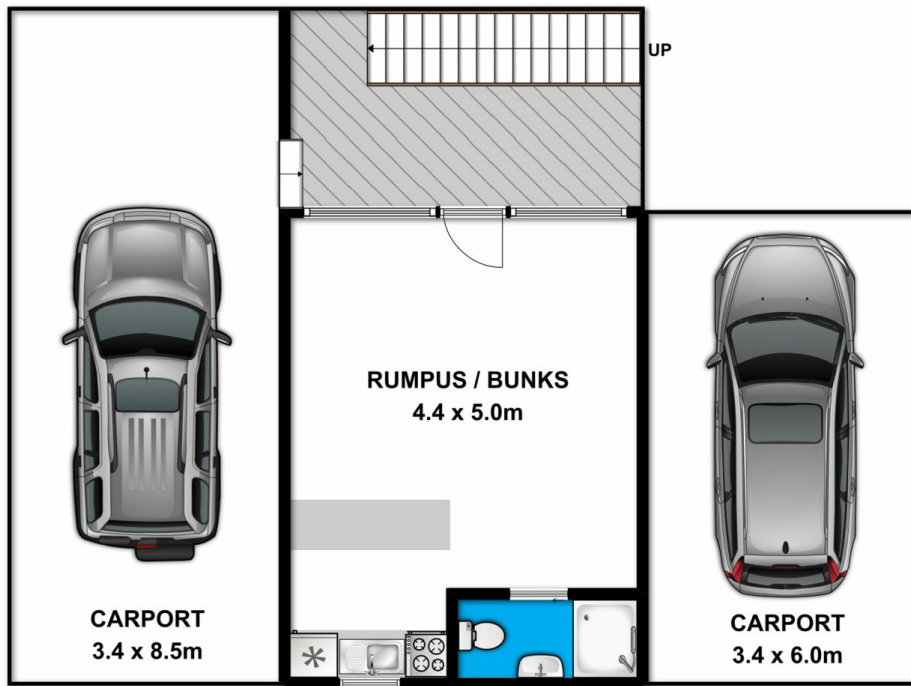
**Marty Maher**  
0352200000



**Mim Atkinson**  
0352200000



**First Floor**



**Ground Floor**

Whilst [bwrn.com.au](http://bwrn.com.au) has made every attempt to ensure the accuracy of the floor plan contained here, measurements are approximate and no responsibility is taken for any error, omission, or mis-statement. This plan is for illustrative purposes only.

