



45 Eagle Rock Parade AIREYS INLET VIC

4 2 2

Offers required by Monday 17 April 2017

With direct beach access in front of the property, this outstanding front row position is one of the closest houses to the beach on the Surfcoast. Look down onto the breaking surf by day and listen to it as you entertain on the large deck by night, the four bedroom residence enjoys all the elements you would expect in a classic beach house. The open plan of the main living area opens onto the surrounding sundeck creating an enormous space for relaxed coastal living. Enhanced by the reclaimed timber floors, an abundance of natural light and an open fire, this is a very special space that can comfortably cater for large numbers if required. The lower level is an incredibly large multi-purpose space. An obvious rumpus area for younger

Type : House
Land Size : 634 sqm
View : <https://www.greatoceanproperties.com.au/3534788>



Marty Maher
0352200000

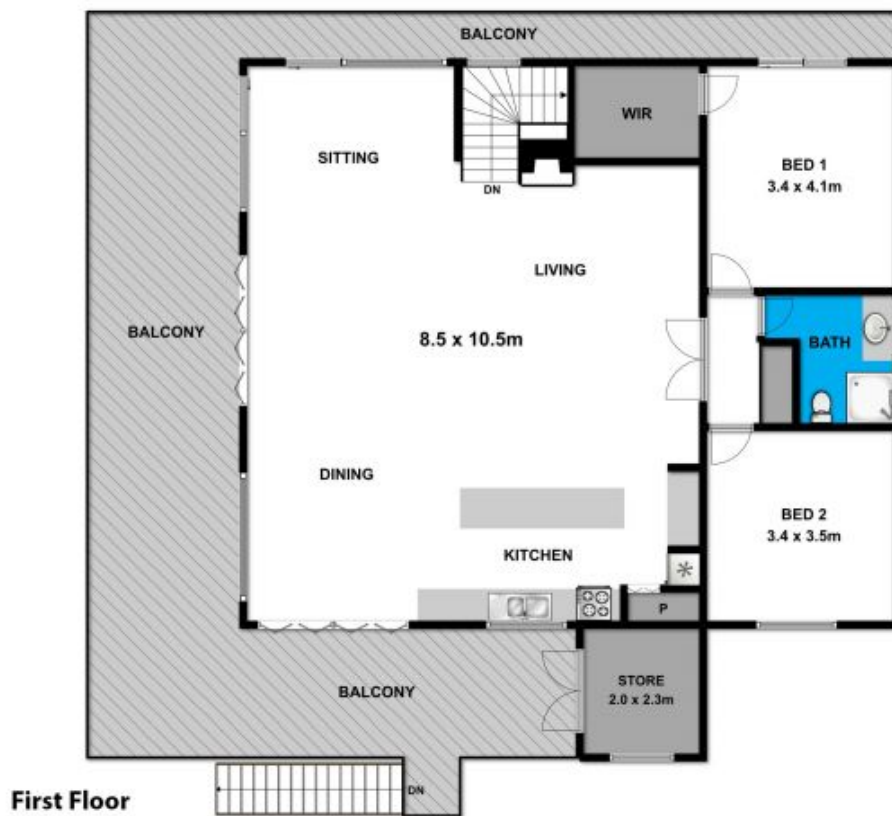


Mim Atkinson
0352200000

[For full version visit the website](https://www.greatoceanproperties.com.au)

<https://www.greatoceanproperties.com.au>

5220 0000



Whilst bwrn.com.au has made every attempt to ensure the accuracy of the floor plan contained here, measurements are approximate and no responsibility is taken for any error, omission, or mis-statement. This plan is for illustrative purposes only.



45 Eagle Rock Parade

Aireys Inlet