



29 Wray Street ANGLESEA VIC

3 1 1

OFFERS REQUIRED BY 18 APRIL 2017

Wrayview House a cherished family home for over 29 years, offering a commanding 180 degree view of the breaking waves at Point Roadknight.

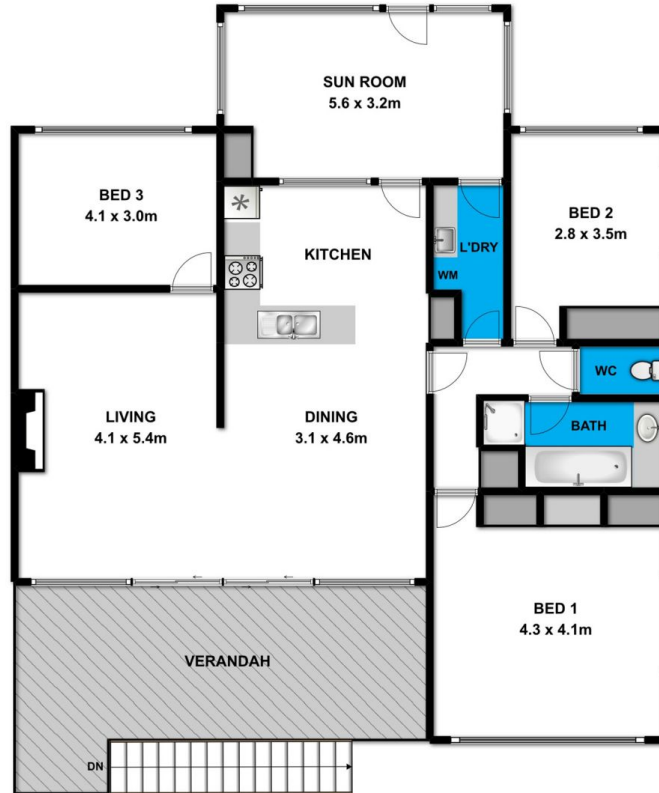
Watch the ever changing panorama unfold before you as you appreciate the stunning views of Anglesea and the sweeping coastline to Point Roadknight and beyond. This elevated property, situated in the heart of Anglesea's dress circle is this much loved 1960's beach house. A showpiece of quintessential Australian style and architecture. This free-flowing open plan layout with an abundance of natural light is ideal for relaxed coastal living and entertaining. Superbly positioned on a generous 727sqm (app) site.

Type : House
Land Size : 727 sqm
View : <https://www.greatoceanproperties.com.au/3539261>

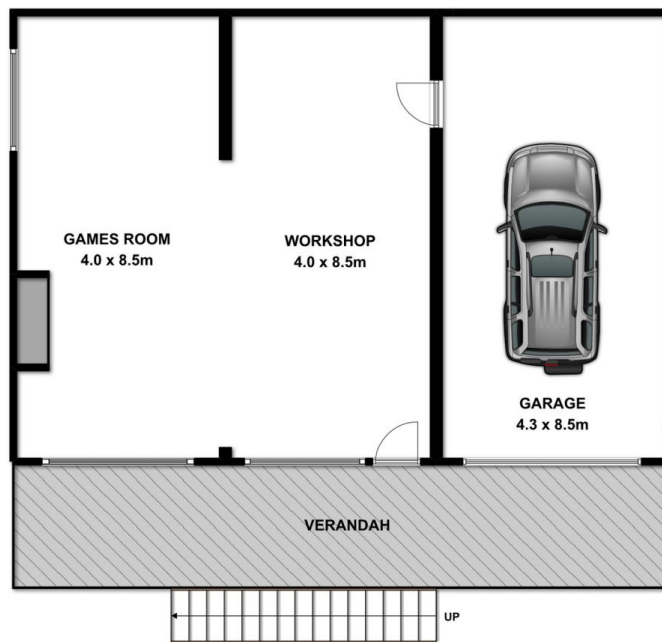


Marty Maher
0352200000

[For full version visit the website](https://www.greatoceanproperties.com.au)



First Floor



Ground Floor

Whilst bwrn.com.au has made every attempt to ensure the accuracy of the floor plan contained here, measurements are approximate and no responsibility is taken for any error, omission, or mis-statement. This plan is for illustrative purposes only.



29 Wray Street

Anglesea