



## 22 Cameron Road ANGLESEA VIC

4 2 2

From first impressions to the last glance, this beach side coastal home seamlessly combines form, functionality, style and quality.

Positioned in a highly-sought area of Anglesea; astute coastal buyers appreciate this quiet and secluded beachside location with direct access to the surf coast walking trail/main beach access trail is a mere nine properties away. You are within a similar proximity to the Anglesea village, bowling club and tennis club. Children and those young at heart will love the adventure walk/ride through Fairyland to the river precinct.

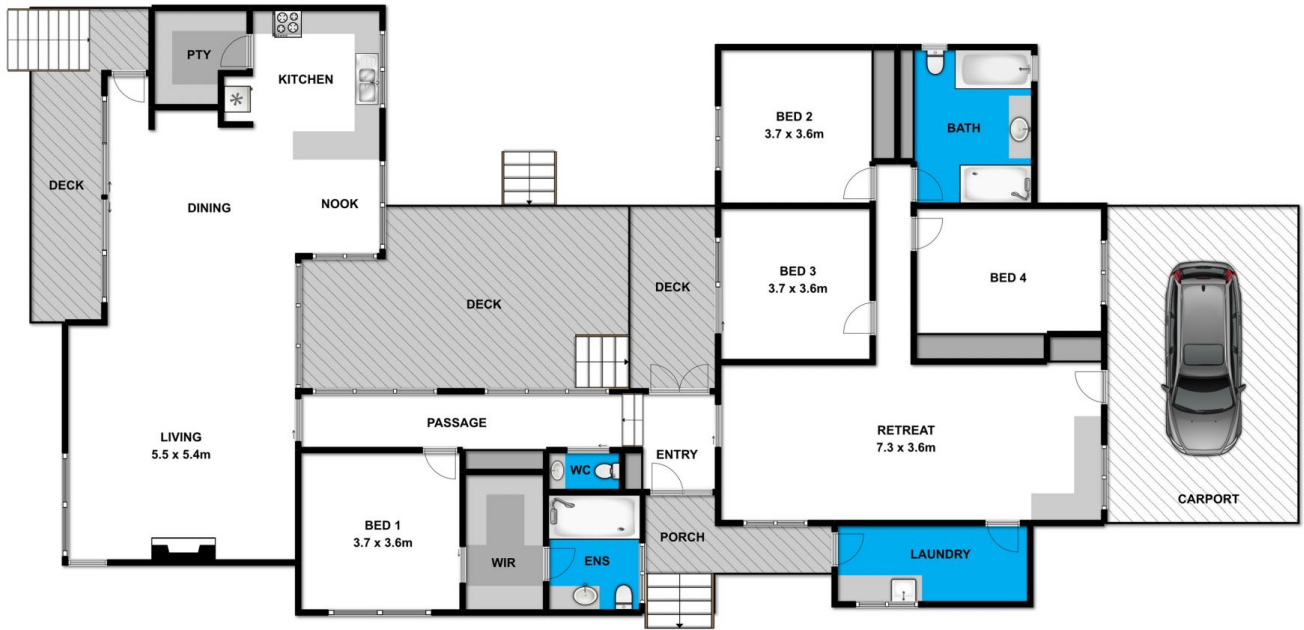
As you meander your way through the stunning Moonah trees and the native indigenous garden your excitement

[For full version visit the website](https://www.greateoceanproperties.com.au/3646645)

**Type** : House  
**Land Size** : 880 sqm  
**View** : <https://www.greateoceanproperties.com.au/3646645>



**Marty Maher**  
**0352200000**



Whilst [bwrn.com.au](http://bwrn.com.au) has made every attempt to ensure the accuracy of the floor plan contained here, measurements are approximate and no responsibility is taken for any error, omission, or mis-statement. This plan is for illustrative purposes only.



**22 Cameron Road**

**Anglesea**