



## 11 Elizabeth Street ANGLESEA VIC

4 2 2

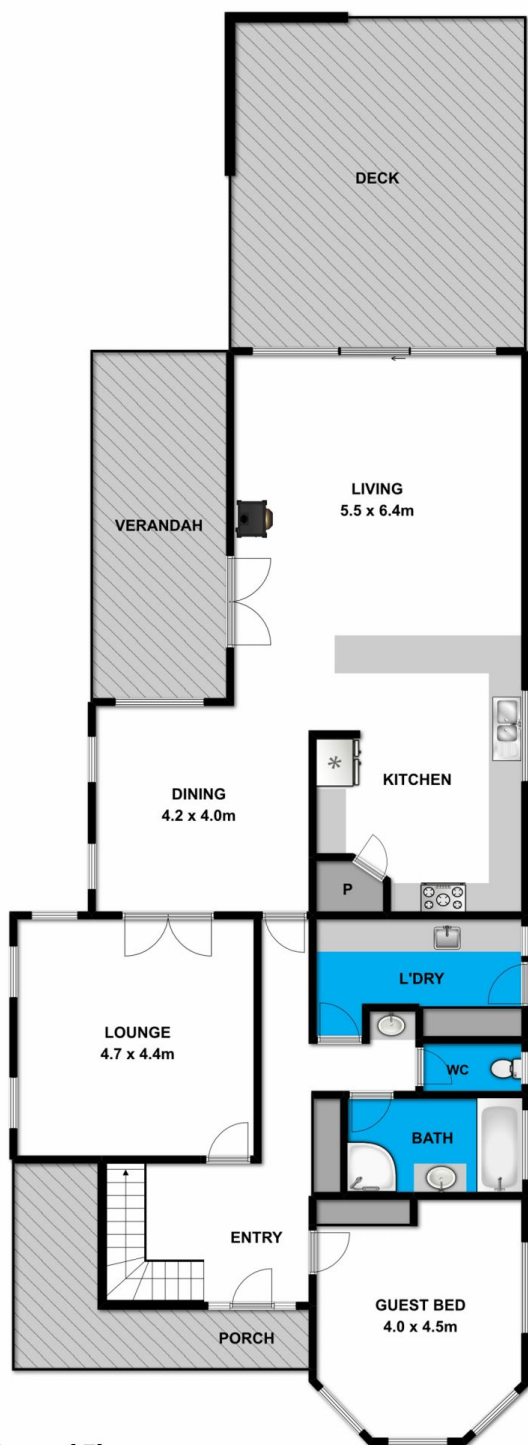
This is a spacious, architect designed family home on a generous 834sqm (app) allotment. Located on a quiet street in a popular, family friendly area; a short walk to the school and shopping precinct. Solidly constructed on a concrete slab foundation, it has been well maintained and ready to enjoy immediately. The property is slightly elevated with an ample, north facing back yard to soak up the summer sun. The impressive, relaxed design offers four bedrooms, two bathrooms, powder room, two separate living areas and a large, fully appointed kitchen. The rear living area opens out onto the expansive decked entertaining area, flowing into the grassed backyard. The property leaves a lasting impression of light and space. The large shed/workshop features 3 phase power and industrial quality shelving, catering for all the practical and

**Type** : House  
**Land Size** : 834 sqm  
**View** : <https://www.greatoceanproperties.com.au/3934771>

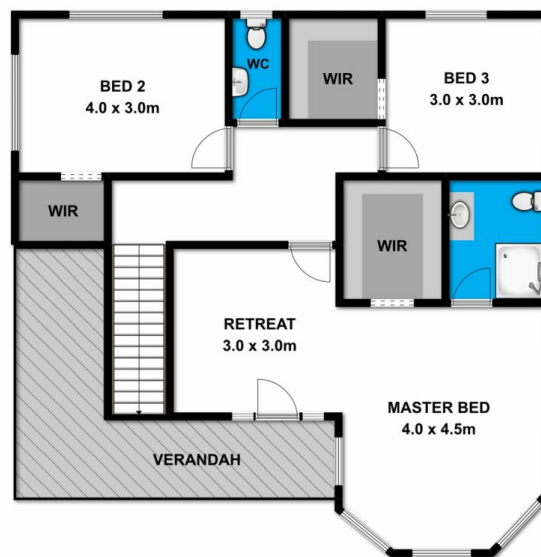


**Marty Maher**  
**0352200000**

[For full version visit the website](https://www.greatoceanproperties.com.au)



Ground Floor



First Floor

Whilst [bwrn.com.au](http://bwrn.com.au) has made every attempt to ensure the accuracy of the floor plan contained here, measurements are approximate and no responsibility is taken for any error, omission, or mis-statement. This plan is for illustrative purposes only.



11 Elizabeth Street

Anglesea