



32 Kalbaru Drive FAIRHAVEN VIC

3 1 2

Auction 10 December 2017 at 1pm

You will be genuinely amazed at the panoramic ocean and lighthouse views from the elevated position of this beautifully renovated beach house. The open plan living and kitchen area captures the expansive views and an abundance of natural light. The residence features two outdoor entertaining areas - a large sundeck that maximises the outlook on the ocean side and a tastefully landscaped private courtyard on the northern side. With street level walkway and parking, the property is incredibly versatile and easily accessible, providing a seamless entry. Whilst currently an elevated single level 3BR residence set on a substantial 788sqm (approx) allotment, the future owner has potential to utilise the large area below the

Type : House
Price : \$ 1,000,000
Land Size : 788 sqm
View : <https://www.greatoceanproperties.com.au/3959283>

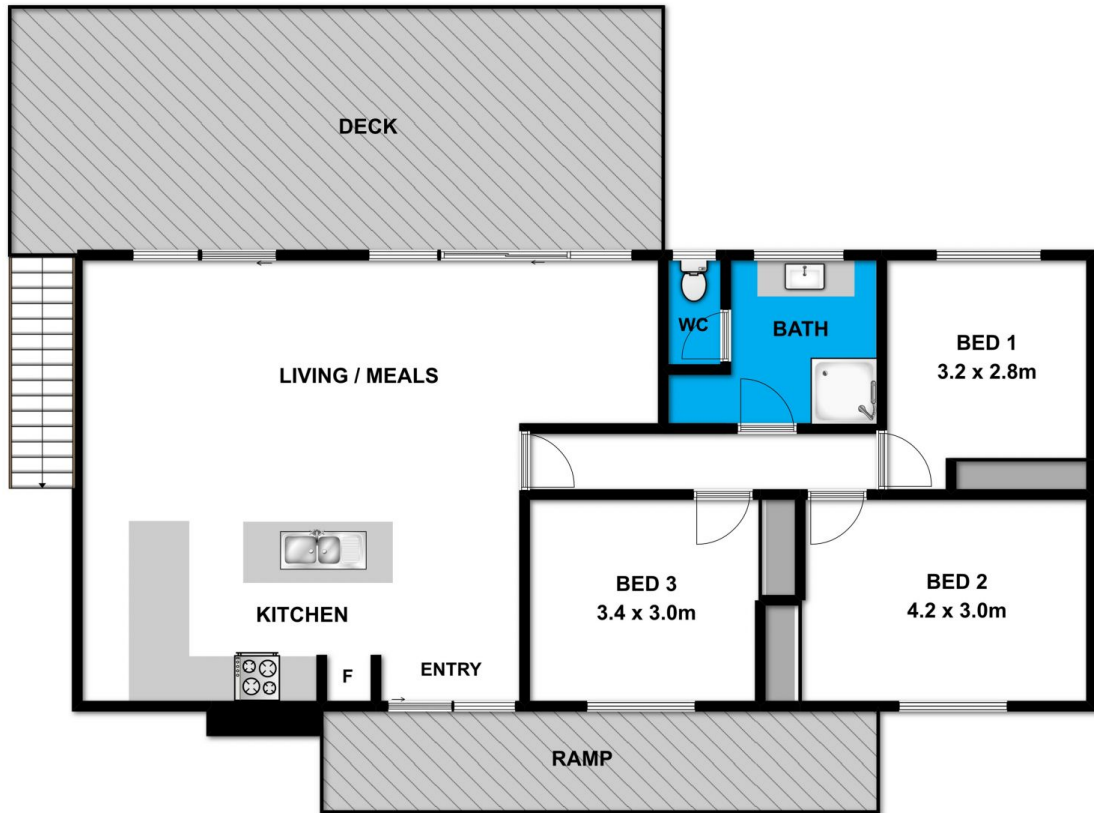


Marty Maher
0352200000



Mim Atkinson
0352200000

[For full version visit the website](https://www.greatoceanproperties.com.au)



Whilst bwrn.com.au has made every attempt to ensure the accuracy of the floor plan contained here, measurements are approximate and no responsibility is taken for any error, omission, or mis-statement. This plan is for illustrative purposes only.



32 Kalbaru Drive

Fairhaven