



26 McMahon Avenue ANGLESEA VIC

3 2 2

This picturesque north facing residence reveals a comfortable combination of coastal charm and contemporary updates. In a location constantly sought after in the heart of Anglesea, yet tucked away with elevated tree top views towards the Golf Course.

This immaculately presented double storey beach house has been designed to allow seamless living throughout. The home boasts three bedrooms, two living areas and 2 bathrooms.

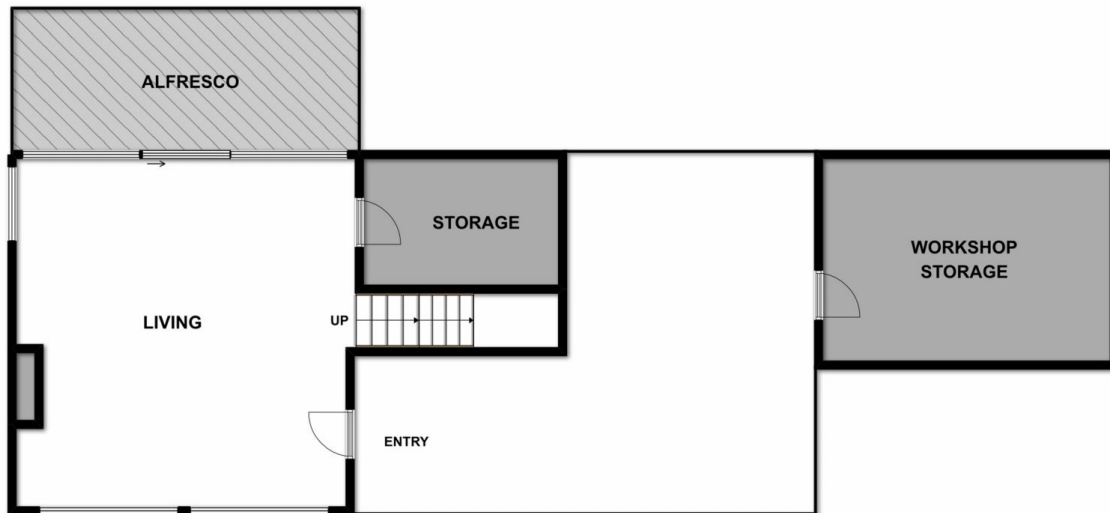
Conducive to family life, this property features an expansive kitchen/living/dining hub that overlooks the private grassed front yard. The expansive decked entertaining area where the indoors and outdoors merge through a sliding door allows the property to be opened on those beautiful summer days to enjoy the best of Anglesea

Type : House
Land Size : 1007 sqm
View : <https://www.greatoceanproperties.com.au/4030586>



Marty Maher
0352200000

[For full version visit the website](https://www.greatoceanproperties.com.au)



LOWER LEVEL



UPPER LEVEL

Whilst bwrn.com.au has made every attempt to ensure the accuracy of the floor plan contained here, measurements are approximate and no responsibility is taken for any error, omission, or mis-statement. This plan is for illustrative purposes only.



26 McMahon Avenue

Anglesea