



**1 Tenth Avenue ANGLESEA VIC**

4 2 2

**OFFERS REQUIRED BY 14 FEBRUARY 2018**

This is the epitome of coastal excellence, privately set in an established privileged locale situated on a generous 1392sqm (app). A home completely embraced by its surroundings. Only minutes to the sandy shores of Point Roadknight Beach and designed to satisfy every desire, want and need.

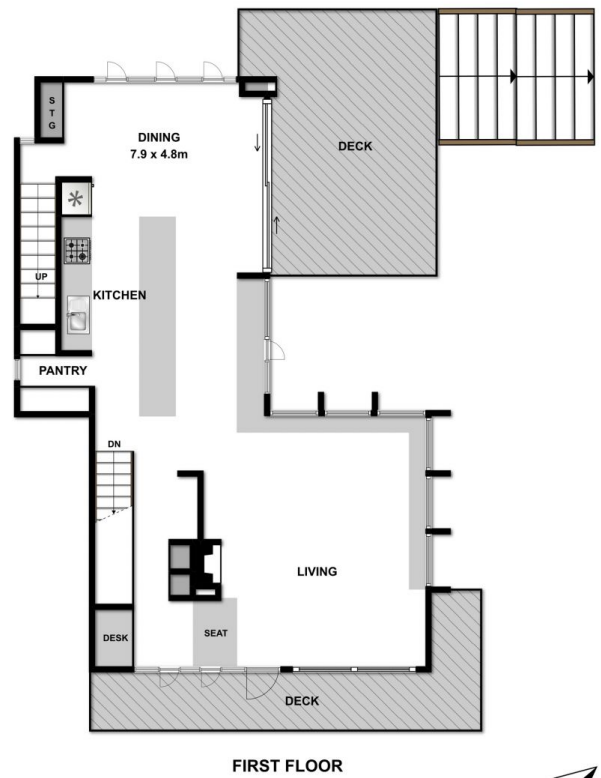
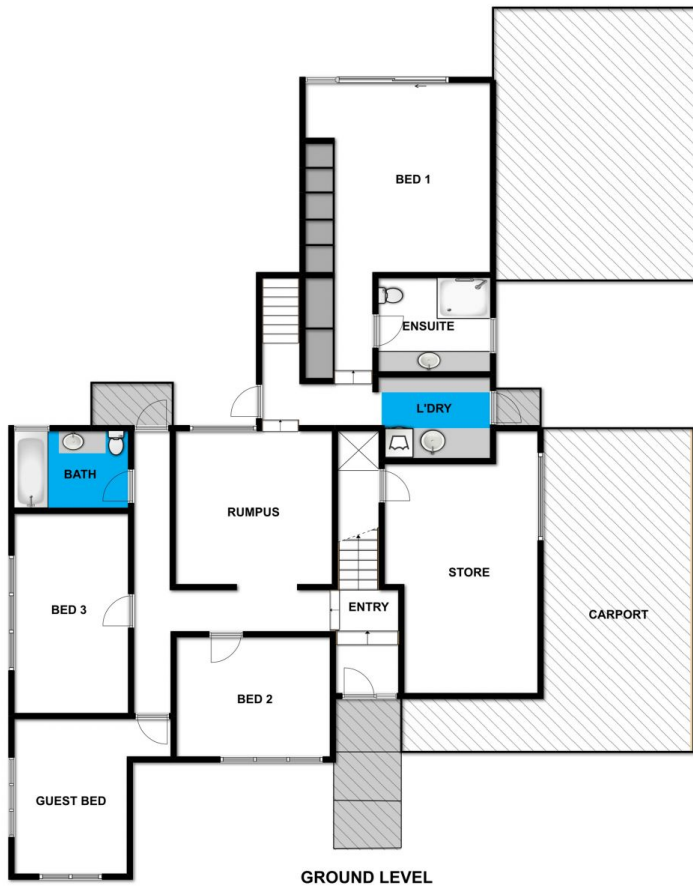
Architect Emma Mitchell has paid homage to this home's humble beach house beginnings with a sensitive renovation. Now elevated to a contemporary masterpiece, this home's most striking feature is the second storey open plan living zone. With soaring ceilings and extensive glazing harnessing the northerly aspect, it is seriously spacious with invitingly intimate nooks to retreat to.

**Type** : House  
**Land Size** : 1392 sqm  
**View** : <https://www.greatoceanproperties.com.au/4061493>



**Marty Maher**  
**0352200000**

[For full version visit the website](https://www.greatoceanproperties.com.au)



Whilst [bwrn.com.au](http://bwrn.com.au) has made every attempt to ensure the accuracy of the floor plan contained here, measurements are approximate and no responsibility is taken for any error, omission, or mis-statement. This plan is for illustrative purposes only.



1 Tenth Avenue

Anglesea