



**48 Melba Parade ANGLESEA VIC**

4 2 2

**OFFERS REQUIRED BY 19 FEBRUARY 2018**

Modern architectural design, stunning views and the most prime Anglesea location on highly coveted Melba Parade, this is the dream coastal combination. Beautiful and family-friendly Point Roadknight beach is just across the road. From the covered deck you can see the sunrise in the morning and have drinks with family and friends in the evening, watching the waves roll in across the Point. On the second storey, floor to ceiling glazing opens up to the breathtaking views all the way across from Point Roadknight to Point Addis. The spacious open plan living area is designed for entertaining, with a centrally located kitchen, dining area and lounges around the cosy gas log fire. The master bedroom is a secluded hideaway with its

**Type** : House  
**Land Size** : 930 sqm  
**View** : <https://www.greatoceanproperties.com.au/4064060>

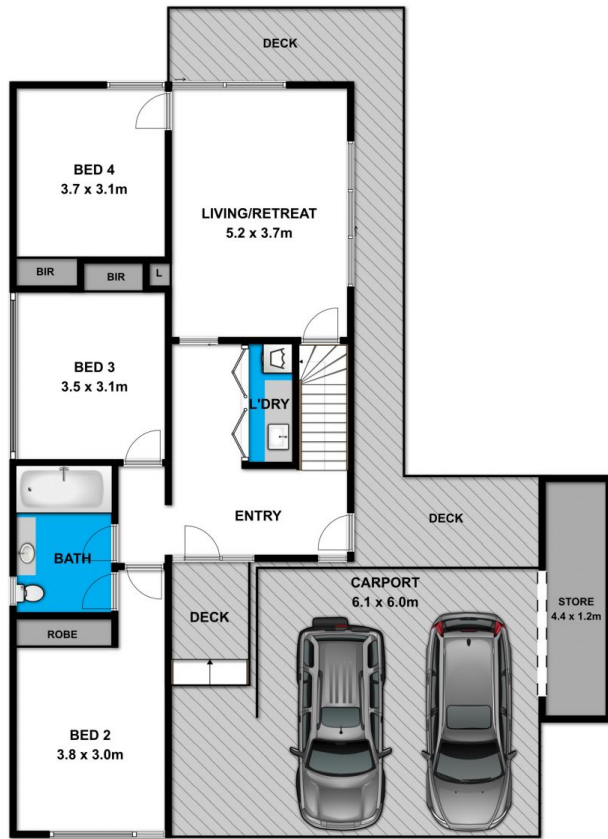


**Marty Maher**  
**0352200000**

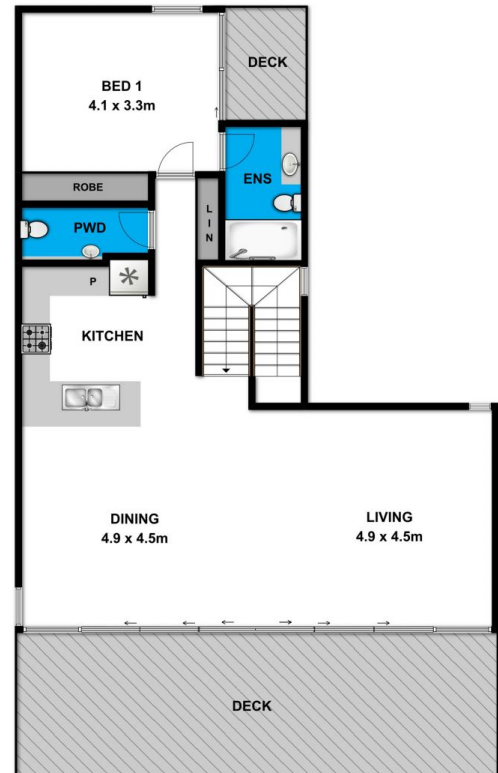
[For full version visit the website](https://www.greatoceanproperties.com.au)

<https://www.greatoceanproperties.com.au>

5220 0000



Ground Floor



First Floor

Whilst [bwrn.com.au](http://bwrn.com.au) has made every attempt to ensure the accuracy of the floor plan contained here, measurements are approximate and no responsibility is taken for any error, omission, or mis-statement. This plan is for illustrative purposes only.



**48 Melba Parade**

**Anglesea**