



## 15 Painkalac Court AIREYS INLET VIC

3 1 2

AUCTION 24 FEBRUARY 2018 AT 2PM

The superb position of this property, set in the tightly held oceanside precinct, is matched by the presentation of this classic 3BR beach house. With the beautiful Inlet Beach and river only a 3 minute stroll in one direction via the public access across the road, and nearby shops and cafes in the other, you can just park the car and forget about it. The split level residence has been very well maintained and the style of the dwelling matches its beach setting perfectly. The upper level has a northern facing sun deck which looks over the very private, landscaped garden. Features include open plan living, kitchen and dining, sun deck and balcony, wood heater, airconditioning, double carport and a view of the Lighthouse. With the 573 sqm

**Type** : House  
**Price** : \$ 935,000  
**Land Size** : 573 sqm  
**View** : <https://www.greatoceanproperties.com.au/4076794>



**Mim Atkinson**  
0352200000

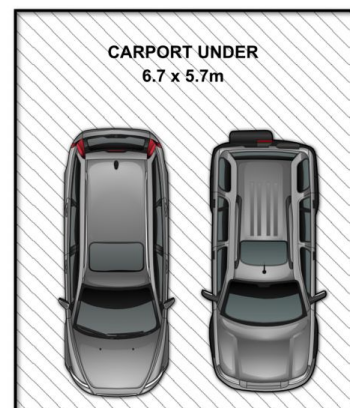
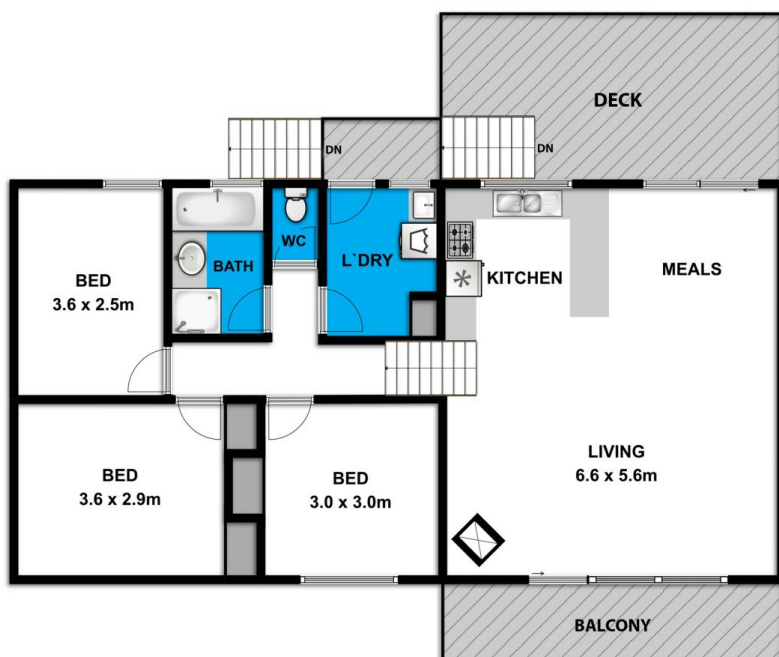


**Marty Maher**  
0352200000

[For full version visit the website](https://www.greatoceanproperties.com.au)

<https://www.greatoceanproperties.com.au>

5220 0000



Whilst [bwrn.com.au](http://bwrn.com.au) has made every attempt to ensure the accuracy of the floor plan contained here, measurements are approximate and no responsibility is taken for any error, omission, or mis-statement. This plan is for illustrative purposes only.



**15 Painkalac Court**

**Aireys Inlet**