



## 106 Noble Street ANGLESEA VIC

4 2 2

Set perfectly amongst the trees this beach house captures a beautiful native outlook across the tree tops, over the golf course and towards Point Addis. Watch the ever-changing panorama unfold from this elevated northerly position.

With its abundance of natural light and framed by glass to capture the 180-degree views, the spacious upstairs open plan living/dining and kitchen encourages an easy flow to the expansive sundeck that wraps around the home to the covered entertaining area, perfect for indoor/outdoor living and that relaxed coastal lifestyle.

Cleverly designed to maximise the treed vistas, this beautifully presented two-storey beach house features four large bedrooms zoned for family living, two bathrooms and a second living area.

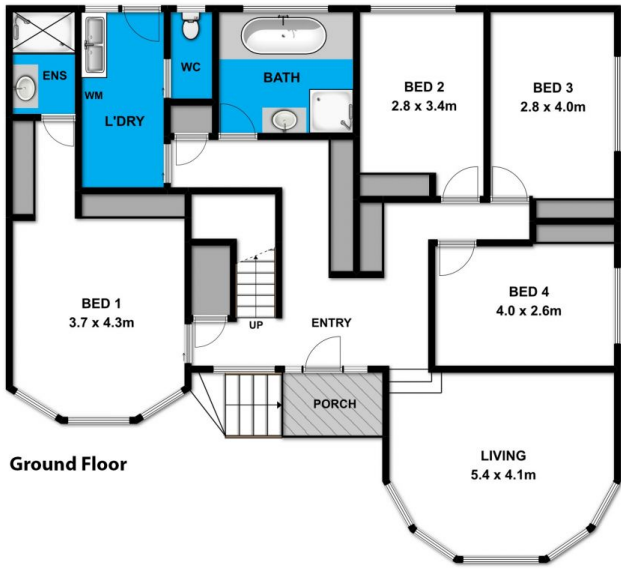
Positioned on a 764sqm (app) elevated allotment, this

[For full version visit the website](https://www.greatoceanproperties.com.au/4090989)

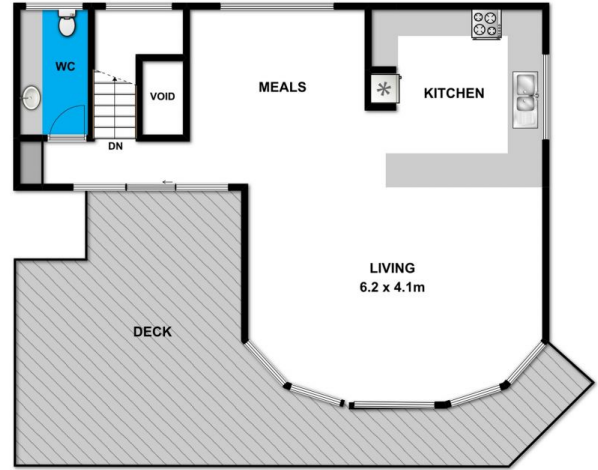
**Type** : House  
**Price** : \$ 900,000  
**Land Size** : 764 sqm  
**View** : <https://www.greatoceanproperties.com.au/4090989>



**Marty Maher**  
0352200000



Ground Floor



First Floor

Whilst [bwrn.com.au](http://bwrn.com.au) has made every attempt to ensure the accuracy of the floor plan contained here, measurements are approximate and no responsibility is taken for any error, omission, or mis-statement. This plan is for illustrative purposes only.



106 Noble Street

Anglesea