



## 9A McMahon Avenue ANGLESEA VIC

3 2 2

Here is a bespoke build that enhances every facet of its dream location. Backing on to the golf course and positioned to harness the views and sunlight, this home offers a unique lifestyle in Anglesea's nature filled heart.

With timber accents throughout, slate flooring and a tranquil décor, this architecturally designed home blends into and showcases its natural surroundings.

Floor to ceiling glazing in the open plan living invites in the views, while the log fire and under slab heating keep things cosy. The kitchen has been outfitted to please the keenest of cooks. The master suite is a gorgeous retreat; it is light and bright with treetop and garden views.

The north-facing courtyard offers sheltered and sunny outdoor living and overlooks a superbly landscaped naturalistic garden set on 1260sqm (app) allotment.

**Type** : House

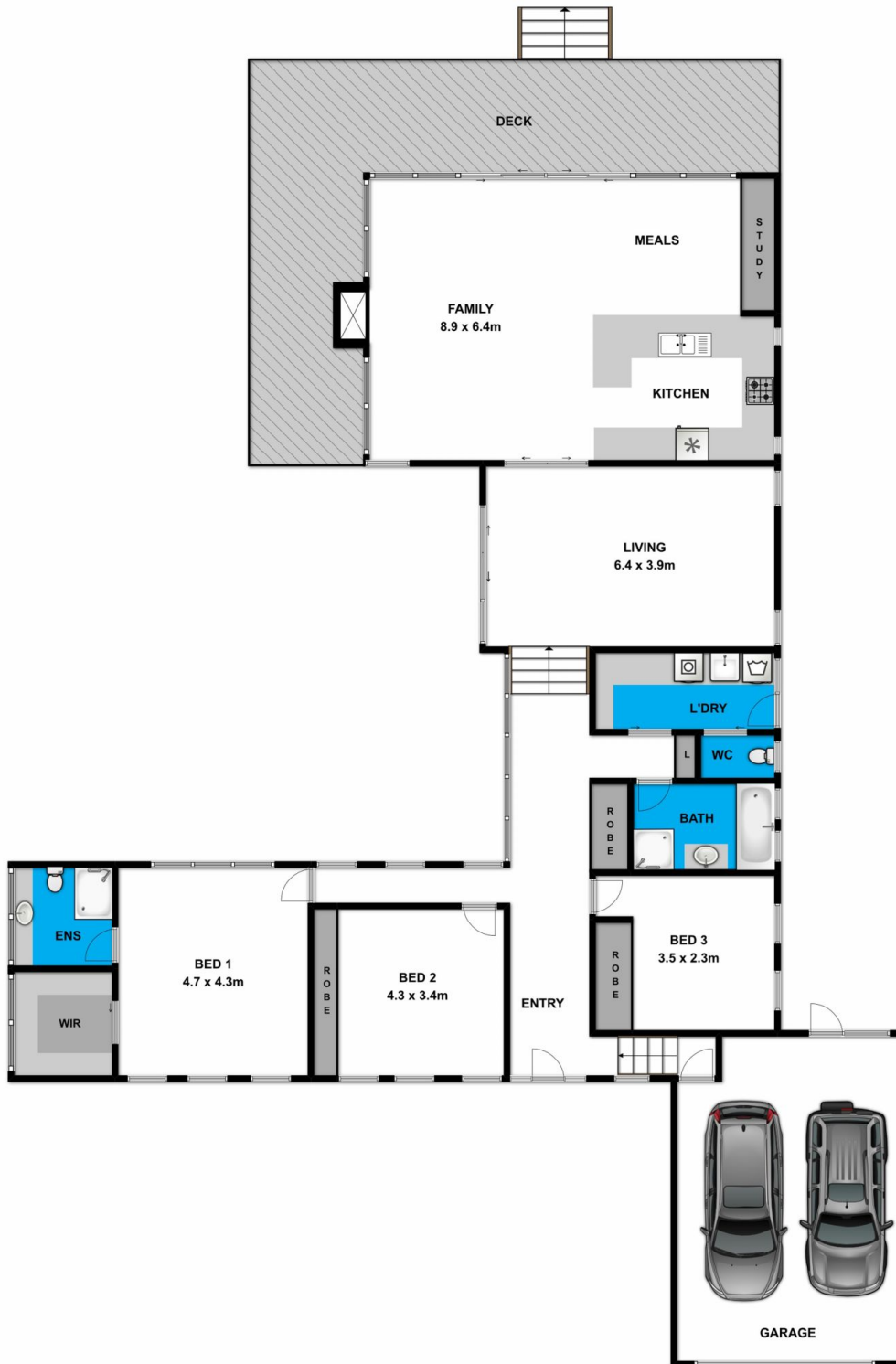
**Land Size** : 1255 sqm

**View** : <https://www.greatoceanproperties.com.au/4168433>



**Marty Maher**  
0352200000

[For full version visit the website](https://www.greatoceanproperties.com.au)



Whilst [bwrn.com.au](http://bwrn.com.au) has made every attempt to ensure the accuracy of the floor plan contained here, measurements are approximate and no responsibility is taken for any error, omission, or mis-statement. This plan is for illustrative purposes only.



**9a McMahon Avenue**

**Anglesea**