



10 Chatswood Drive ANGLESEA VIC

4 2 2

Catering to coastal lifestyle convenience, this perfectly presented home offers space and total privacy in a prime walk to everything location backing on to the Kuarka Dorla reserve and walking track.

More than expected, this warm and inviting home has a lovely touch of character with its flowing floorplan, timber flooring and generously proportioned spaces creating a relaxing lifestyle.

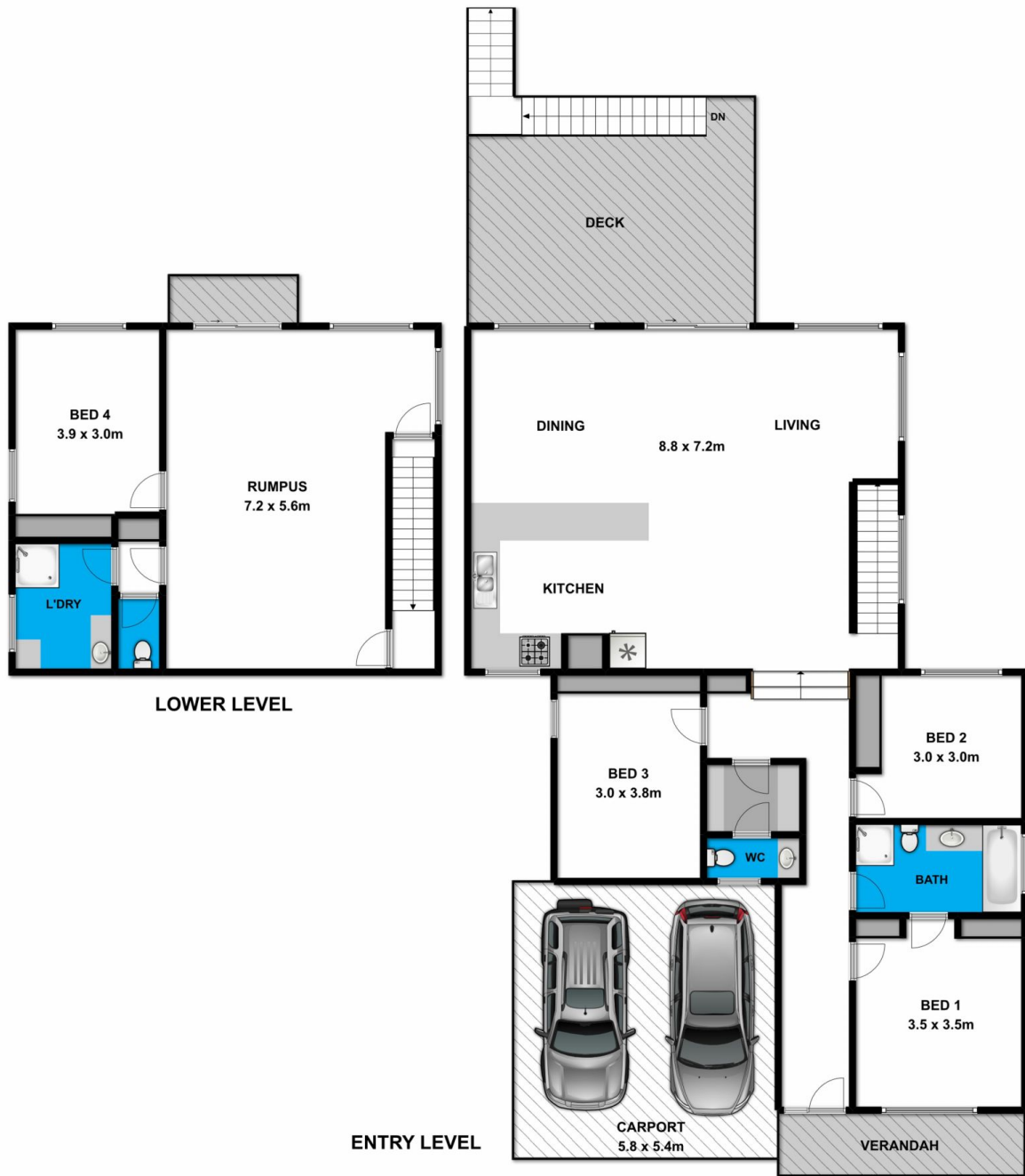
Comprising four bedrooms, two bathrooms, three toilets, two generous living spaces, an open plan layout with a sizeable kitchen, dining and living that is the central family hub, set under soaring ceilings and highlighted by earthy tones and seamless integration between indoor and outdoor living. The glass sliding doors opening to the outdoor oasis with the expansive timber deck area, are

Type : House
Price : \$ 832,000
Land Size : 599 sqm
View : <https://www.greatoceanproperties.com.au/4193281>



Marty Maher
0352200000

[For full version visit the website](https://www.greatoceanproperties.com.au)



Whilst bwrn.com.au has made every attempt to ensure the accuracy of the floor plan contained here, measurements are approximate and no responsibility is taken for any error, omission, or mis-statement. This plan is for illustrative purposes only.



10 Chatswood Drive

Anglesea