



96 Dorman Street LORNE VIC

4 3 2

Even the sea view from the front door won't prepare you for the breathtaking panoramic vista that greets you from inside. This is one of the best, uninterrupted views in Lorne and it is on display from almost every room.

In the open plan living zone, full height glazing frames the views from the Split Point Lighthouse in Aireys Inlet across to the famous Lorne Pier.

With a total of 4 bedrooms, there is plenty of room for everyone to enjoy this outstanding location. Convert the rumpus to a media room and add a few modern touches throughout to elevate this home to the next level.

Beach access is literally minutes away via a nearby Great Ocean Road underpass.

Life here slows to a gentle pace encouraging star-gazing, time spent looking for passing whales and watching the

Type : House
Price : \$ 1,700,000
Land Size : 633 sqm
View : <https://www.greatoceanproperties.com.au/4242020>

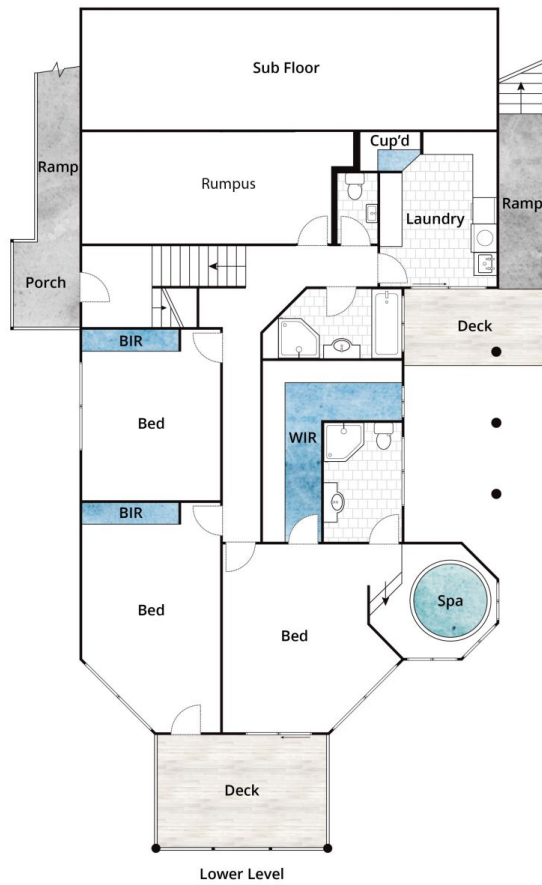


Mim Atkinson
0352200000

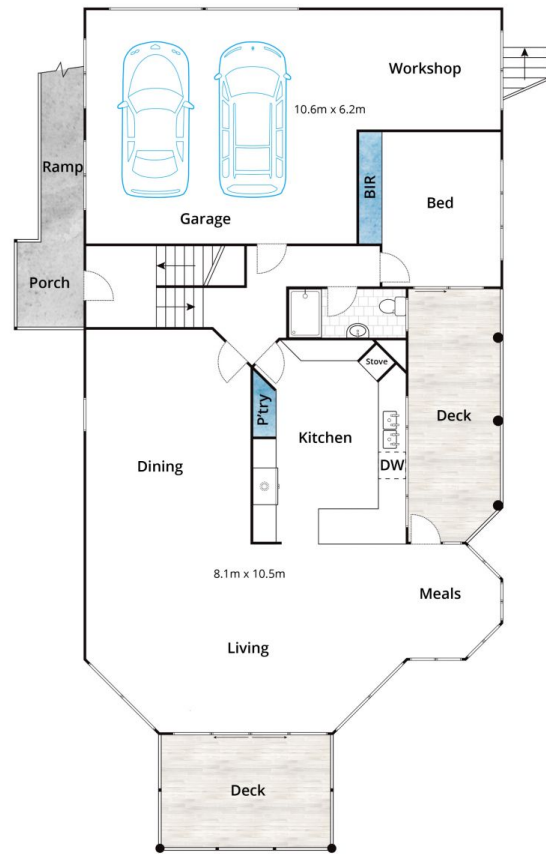


Marty Maher
0352200000

[For full version visit the website](https://www.greatoceanproperties.com.au)



Lower Level



Upper Level

Whilst bwrn.com.au has made every attempt to ensure the accuracy of the floor plan contained here, measurements are approximate and no responsibility is taken for any error, omission, or mis-statement. This plan is for illustrative purposes only.

96 Dorman Street, Lorne

