



26A Camp Road ANGLESEA VIC

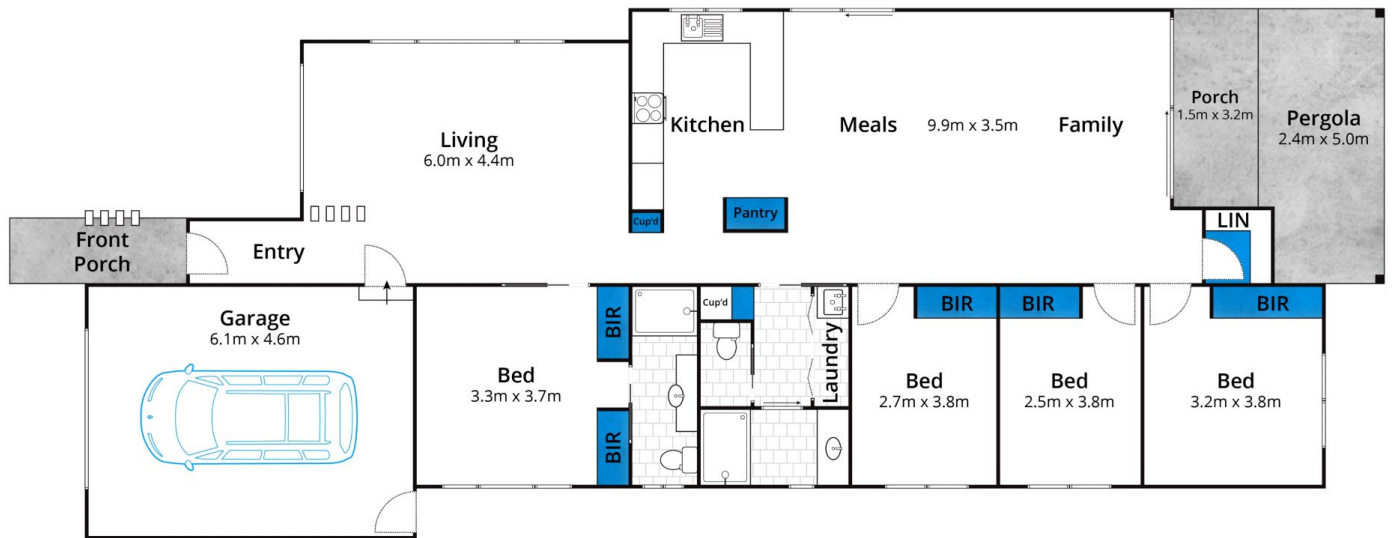
Call the builder???. Enjoy the peace and quiet on offer here and the chance to secure a clear and level prime site in central Anglesea with a planning permit approved by the Surf Coast Shire to build your dream home (STCA). Free of vegetation, this 390sqm (app) block is in close proximity to the shopping and cafe precinct, with Anglesea's patrolled Main Beach, River, Coogoorah Park and walking trails all within easy reach.

This amazing land parcel opens the door to living an enviable Anglesea coastal lifestyle. Enquire Now!

Type : Land
Price : \$ 465,000
Land Size : 390 sqm
View : <https://www.greatoceanproperties.com.au/427407>



Marty Maher
0352200000



Approx. Area 136m²

Whilst bwrm.com.au has made every attempt to ensure the accuracy of the floor plan contained here, measurements are approximate and no responsibility is taken for any error, omission, or mis-statement. This plan is for illustrative purposes only.

26A Camp Road, Anglesea

