



### 38 Old Coach Road MOGGS CREEK VIC

3 1 2

Offers required by 12 October 2018

This much loved, charismatic, three bedroom beach house enjoys a wonderful position adjoining the Great Otway National Park and boasts scenic forest views.

The residence is presented in immaculate condition and is being offered for sale on a walk in - walk out basis. With the open plan living, kitchen and dining areas, as well as substantial sun decks, the residence lends itself perfectly to be the ideal coastal escape, ready to be enjoyed immediately. Set on a large 1051sqm (app) native allotment with stunning ocean views across to Lorne from the rear of the allotment, this is one of those properties that comes onto the market periodically. It is a space that you can easily visualise yourself and your family relaxing in

**Type** : House  
**Price** : \$ 905,000  
**Land Size** : 1051 sqm  
**View** : <https://www.greatoceanproperties.com.au/446046>



**Mim Atkinson**  
0352200000

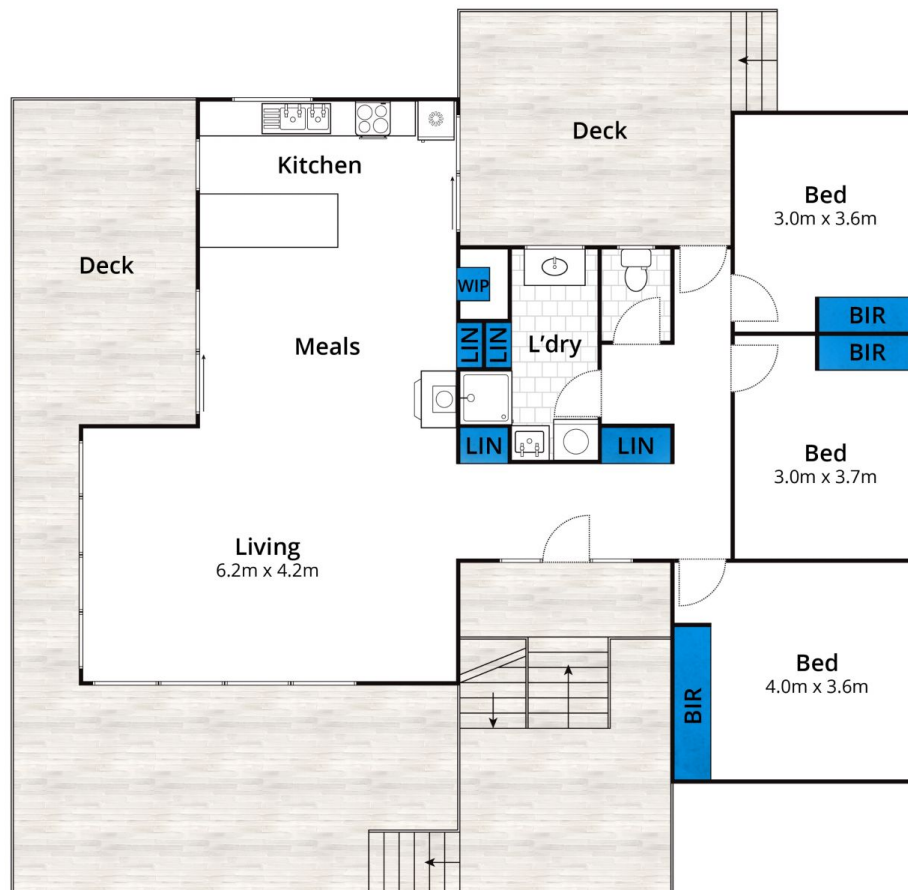


**Marty Maher**  
0352200000

[For full version visit the website](https://www.greatoceanproperties.com.au)

<https://www.greatoceanproperties.com.au>

5220 0000



Approx. Area 108m<sup>2</sup>

Whilst [bwrn.com.au](http://bwrn.com.au) has made every attempt to ensure the accuracy of the floor plan contained here, measurements are approximate and no responsibility is taken for any error, omission, or mis-statement. This plan is for illustrative purposes only.

**38 Old Coach Road, Moggs Creek**

