



9 Lialeeta Road FAIRHAVEN VIC

5 3 4

With a total land area of 2640sqm (app) this substantial and elevated property offers absolutely stunning views towards Aireys Inlet, taking in the ocean, Inlet and the iconic Split Point Lighthouse. From the large 4BR residence and the separate 1BR cottage, you can actually watch the surf break between Aireys Inlet and Fairhaven. The substantial main residence enjoys a good sense of space with 3 living areas and significant sun decking. Lying in the main bedroom watching the ocean with French doors wide open, is what you imagine a true coastal escape should provide. When you include the cottage, there is ample accommodation to cater for the extended family - or AirBNB rental options if the cottage is not required for family use. The elevated position provides a privileged sense of space that is enhanced by the very large allotment

Type : House
Land Size : 2640 sqm
View : <https://www.greatoceanproperties.com.au/4454526>



Marty Maher
0352200000

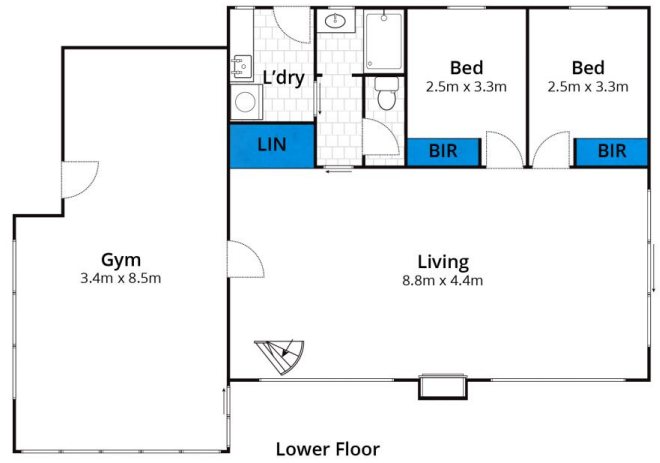
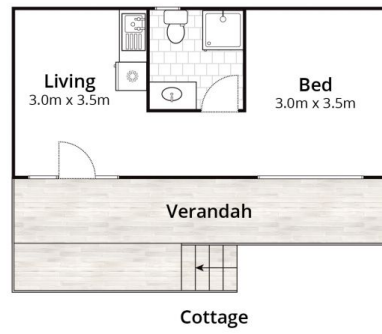
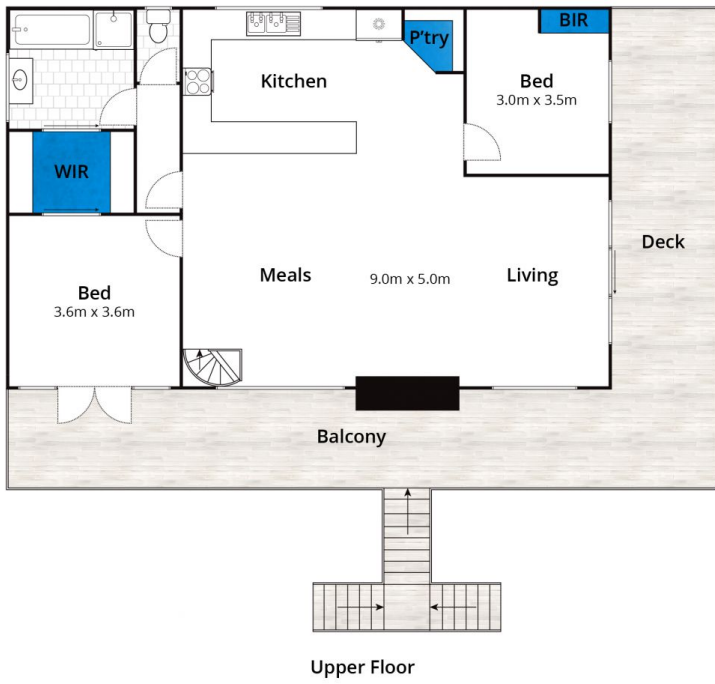


Mim Atkinson
0352200000

[For full version visit the website](https://www.greatoceanproperties.com.au)

<https://www.greatoceanproperties.com.au>

5220 0000



Whilst bwrm.com.au has made every attempt to ensure the accuracy of the floor plan contained here, measurements are approximate and no responsibility is taken for any error, omission, or mis-statement. This plan is for illustrative purposes only.

9 Lialeeta Road, Fairhaven

