



**16 Eleventh Avenue ANGLESEA VIC**

4 2 2

Treasured and tightly held this property is packed with potential and is located only minutes to popular and family friendly Pt Road Knight Beach. The spacious two-storey cedar clad property is completely livable as is and with the 1393sqm (approx) site, it offers an excellent foundation to create a modern coastal masterpiece.

Original features and timber accents of the four bedroom home deliver a relaxed beach house vibe. The two separate living areas are spacious and sunny and offer distinct zones for entertaining and relaxing.

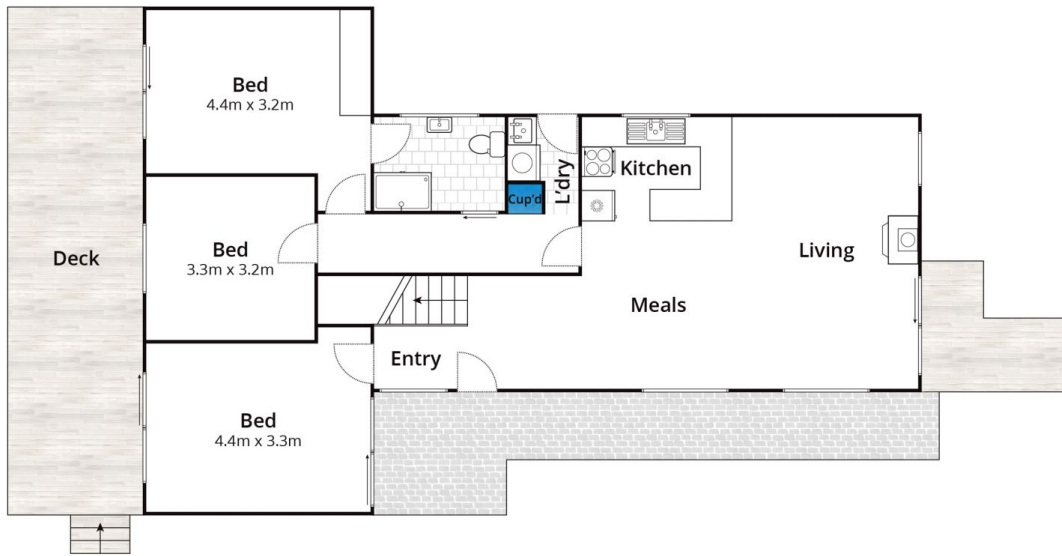
A flat easy care garden with mature trees provides plenty of room for back yard games and shady spots for hammocks and picnic rugs. There is generous secure storage for surfboards and beach toys in the double lock up garage. The sound of breaking waves will gently lure you to the

**Type** : House  
**Land Size** : 1393 sqm  
**View** : <https://www.greatoceanproperties.com.au/478406>

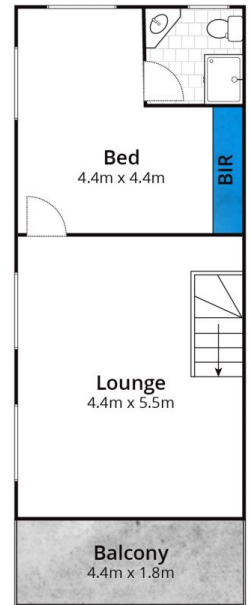


**Marty Maher**  
**0352200000**

[For full version visit the website](https://www.greatoceanproperties.com.au)



Ground Floor



First Floor

Approx. Area 155m<sup>2</sup>

Whilst [bwrn.com.au](http://bwrn.com.au) has made every attempt to ensure the accuracy of the floor plan contained here, measurements are approximate and no responsibility is taken for any error, omission, or mis-statement. This plan is for illustrative purposes only.

## 16 Eleventh Avenue, Anglesea

