



**16 Delview Drive JAN JUC VIC**

4 🏠 2 🚿 2 🚗

Surrounded by a beautiful mature garden and set on a substantial 980sqm (app) allotment, this 4 bedroom, 2 bathroom federation style home fuses the grace and charm of yesterday with today's essential elements for easy living.

Cosy in winter and breezy in summer, the spacious lounge features antique timber vaulted ceilings and well-placed glazing which floods the room with natural light. The family zone, adjacent to the well appointed kitchen, is the place to relax, enjoy the sun and the outlook over the north-facing courtyard and landscaped gardens. Every room is generous with copious storage and the layout is family and guest friendly. The upstairs master retreat is a highlight, it features a third living space, an elegant ensuite, his and hers robes, and a large bedroom with a balcony that boasts distant views and an easterly aspect. Delview

**Type** : House  
**Land Size** : 980 sqm  
**View** : <https://www.greatoceanproperties.com.au/4529343>

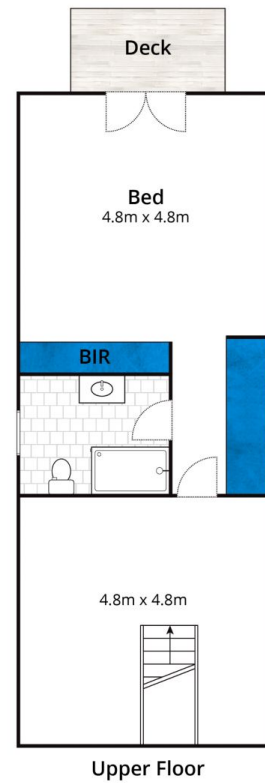
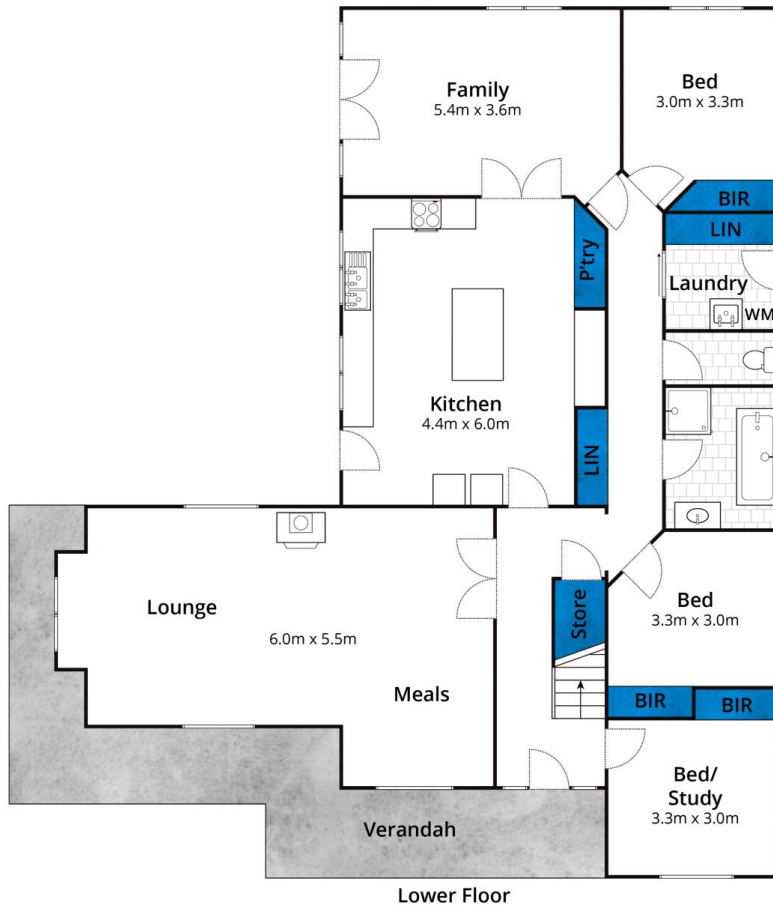


**Marty Maher**  
**0352200000**



**Michelle McDonald**  
**0352631100**

[For full version visit the website](https://www.greatoceanproperties.com.au)



Whilst [bwrn.com.au](http://bwrn.com.au) has made every attempt to ensure the accuracy of the floor plan contained here, measurements are approximate and no responsibility is taken for any error, omission, or mis-statement. This plan is for illustrative purposes only.

## 16 Delview Drive, Jan Juc

