



## 9 Pickworth Drive ANGLESEA VIC

5 2 4

This signature Anglesea beach house captures outstanding 180 degree views in all directions looking down the coast to Point Addis, over the Anglesea golf course, river valley and the Otway National park.

Watch the ever changing panorama unfold from this elevated stunning position. With its abundance of natural light and framed by glass, the open and flowing floor plan captures the panoramic views from every level and every room. The spacious living/dining/kitchen hub opens directly onto an expansive decked entertaining area, perfect for those Anglesea summer days offering ocean views as far as the eye can see.

This cleverly designed two-storey beach house comprises three bedrooms on the upper level, a central bathroom all with easy access to the main living area. Downstairs there

**Type** : House  
**Price** : \$ 900,000  
**Land Size** : 1050 sqm  
**View** : <https://www.greatoceanproperties.com.au/4703747>

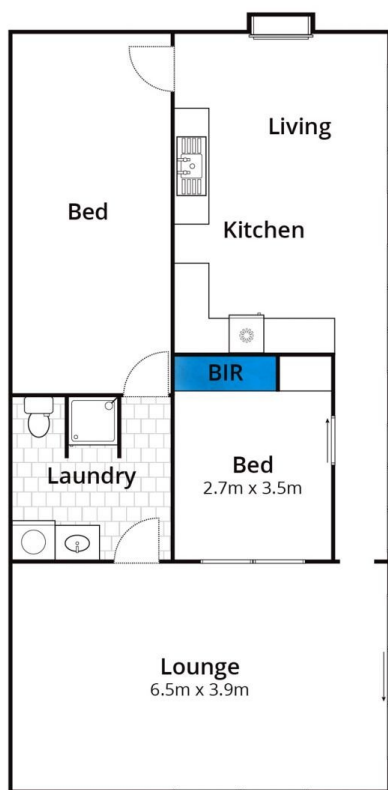


**Marty Maher**  
**0352200000**

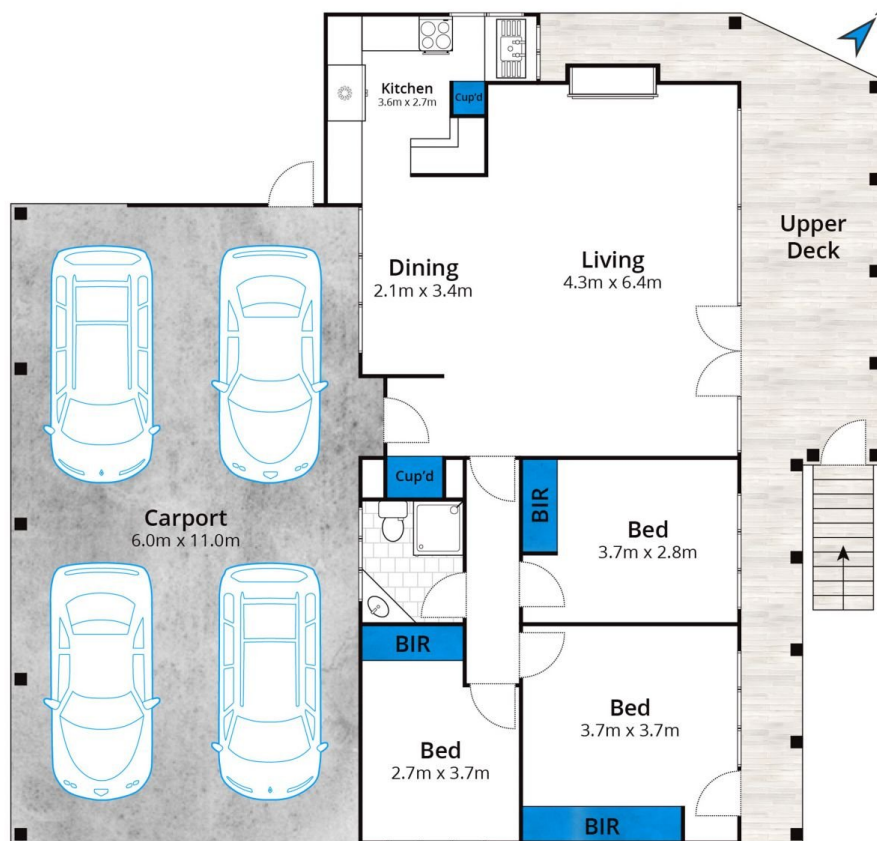
[For full version visit the website](https://www.greatoceanproperties.com.au)

<https://www.greatoceanproperties.com.au>

5220 0000



Ground Floor



First Floor

Approx. Area 168m<sup>2</sup>

Whilst [bwrm.com.au](http://bwrm.com.au) has made every attempt to ensure the accuracy of the floor plan contained here, measurements are approximate and no responsibility is taken for any error, omission, or mis-statement. This plan is for illustrative purposes only.

**9 Pickworth Drive, Anglesea**

