



### 34 Niblick Street ANGLESEA VIC

3 2 2

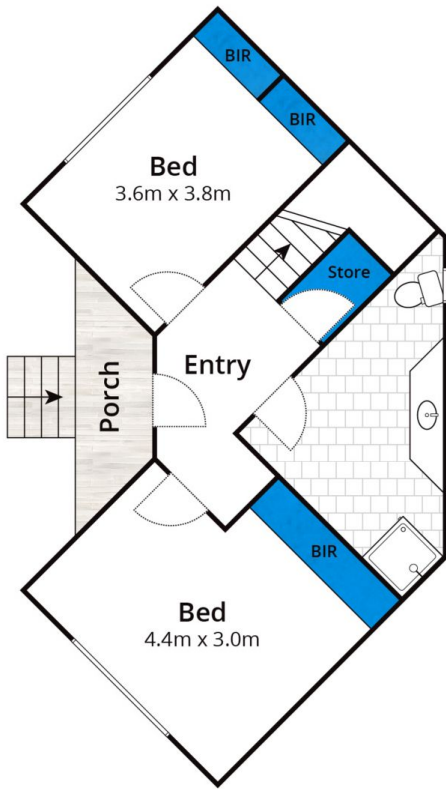
The elevated position of this attractive double storey timber residence captures a picturesque bush and ocean outlook while providing a private coastal living experience. Set on a substantial 815sqm (app) allotment in a quiet part of town and adjoining the Anglesea Golf Course. This home has that relaxed coastal feel. There is ample accommodation with three bedrooms, two bathrooms (master with ensuite and walk in robe). The family will enjoy the large open plan of the upstairs living area that captures an abundance of natural light, with the pitched ceiling line creating a sense of spaciousness. Enjoy the beautiful outlook from both front and rear sundecks that act as an external extension of the living area, superbly positioned to capture the morning and afternoon sun. Ideally landscaped with a low maintenance native garden, it is a special treat to walk from the sundeck

**Type** : House  
**Land Size** : 815 sqm  
**View** : <https://www.greatoceanproperties.com.au/4722142>

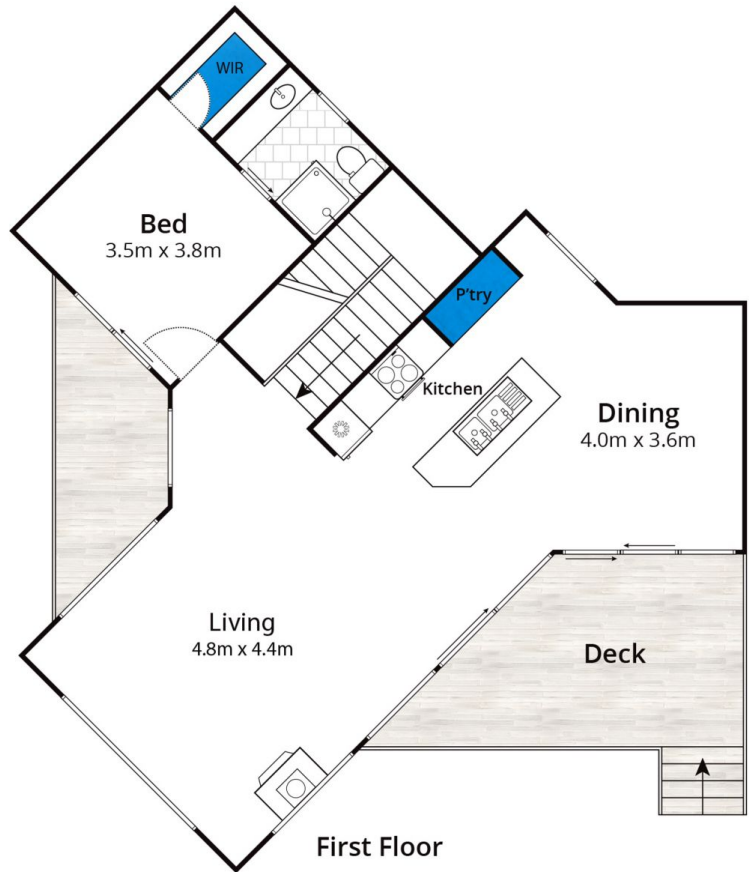


**Marty Maher**  
0352200000

[For full version visit the website](https://www.greatoceanproperties.com.au)



Ground Floor



First Floor

Whilst [bwrn.com.au](http://bwrn.com.au) has made every attempt to ensure the accuracy of the floor plan contained here, measurements are approximate and no responsibility is taken for any error, omission, or mis-statement. This plan is for illustrative purposes only.

**34 Niblick Street, Anglesea**

