



18 Bingley Parade ANGLESEA VIC

3 2 3

This spectacularly spacious and immaculate double storey home with sweeping river views has all the modern comforts that make it the perfect base for your family lifestyle. Positioned perfect directly opposite the Anglesea River and close to Anglesea Village, Hotel, Restaurants and Cafes, Primary School, Coogorah Park and Walking Tracks this gorgeous residence of generous portions offers a home not just for now, but for a lifetime!

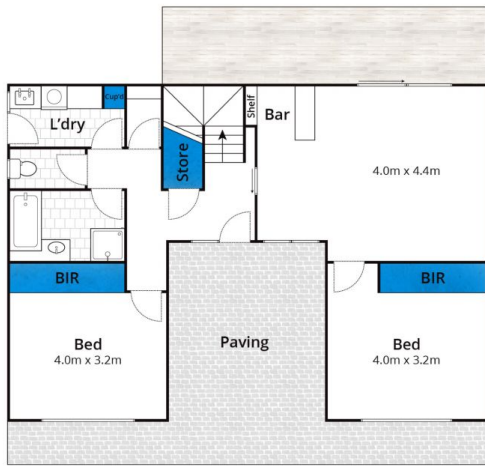
The home offers a smart design with a flowing floor plan featuring 3 bedrooms, master with WIR and ensuite, downstairs offers a central bathroom and separate toilet, dual living zones that exude space and comfort for the whole family with separate living and dining rooms seamlessly flowing to front and rear decked areas.

Type : House
Land Size : 696 sqm
View : <https://www.greateoceanproperties.com.au/4772000>

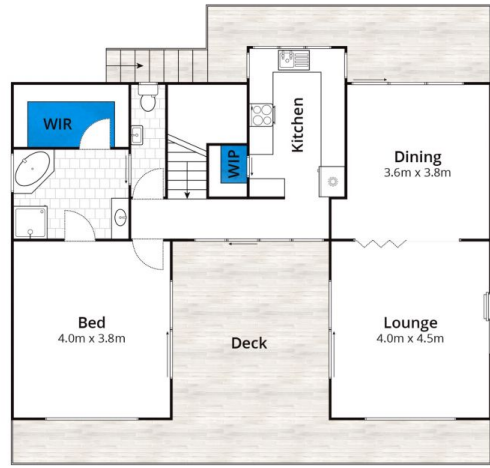


Marty Maher
0352200000

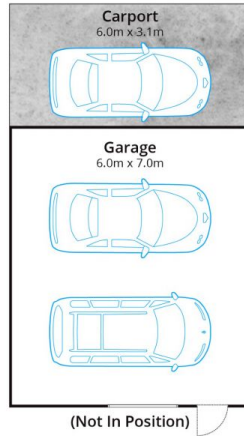
[For full version visit the website](https://www.greateoceanproperties.com.au)



Ground Floor



First Floor



Whilst bwrn.com.au has made every attempt to ensure the accuracy of the floor plan contained here, measurements are approximate and no responsibility is taken for any error, omission, or mis-statement. This plan is for illustrative purposes only.

18 Bingley Parade, Anglesea

