



## 16 Charles Street ANGLESEA VIC

3 2 2

Privately tucked away yet so close to everything, 16 Charles Street is an idyllic escape for living the Anglesea dream. Built to embrace its natural and peaceful surroundings making this home a year-round retreat and all within easy walking distance to the Anglesea river, shops, cafes, beaches and surf club.

Character filled and immaculately presented is this single level beach house with seamless living throughout a generous floor plan which boasts three spacious bedrooms and two bathrooms. The open plan kitchen/living is the homes most striking feature and the central hub that flows effortlessly onto the rear large sundeck or the front garden perfect for entertaining or relaxing. The under-house storage provides ample space for all the necessary items required for a coastal lifestyle.

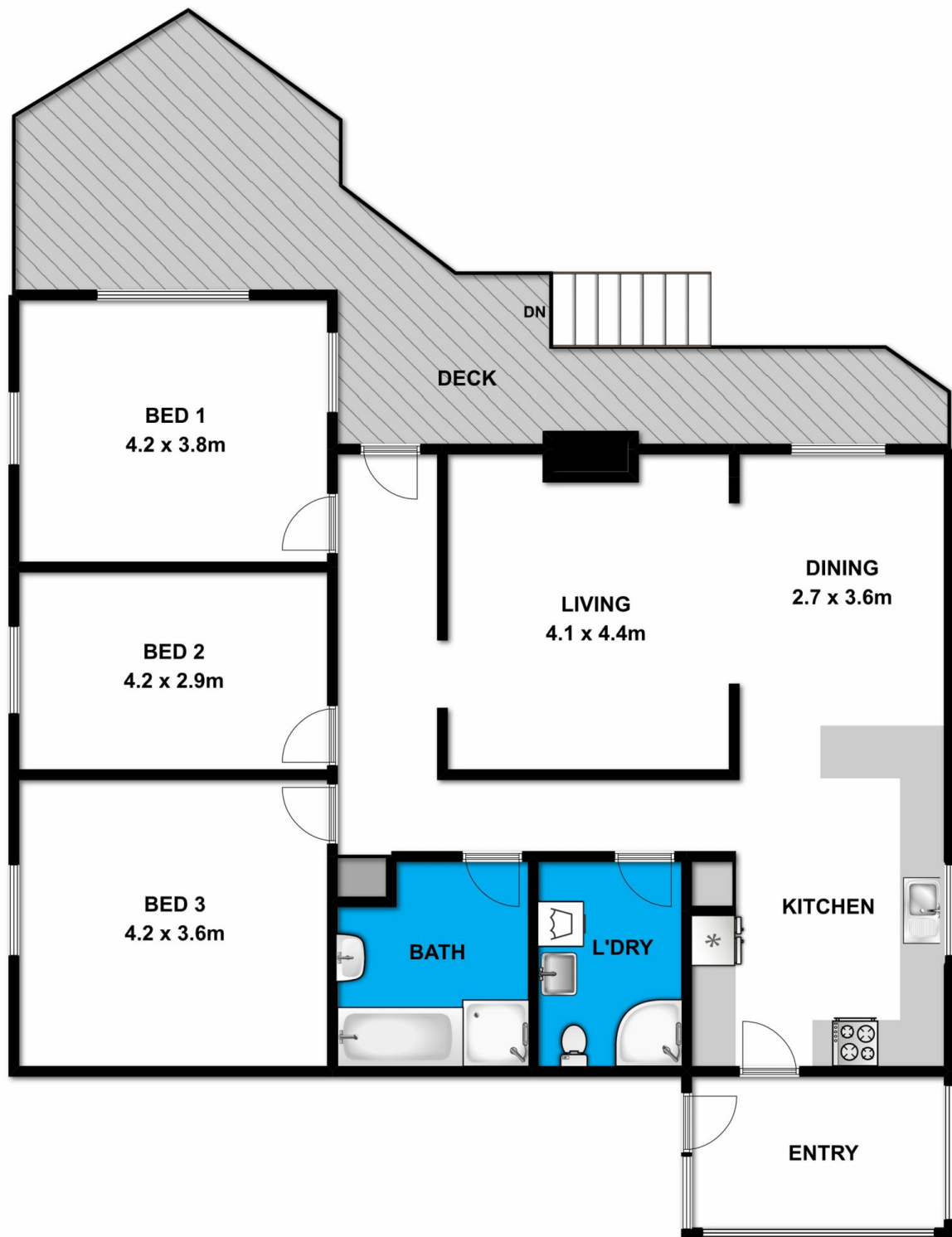
**Type** : House  
**Land Size** : 809 sqm  
**View** : <https://www.greatoceanproperties.com.au/4775267>



**Marty Maher**  
**0352200000**

[For full version visit the website](https://www.greatoceanproperties.com.au)





Whilst [bwrn.com.au](http://bwrn.com.au) has made every attempt to ensure the accuracy of the floor plan contained here, measurements are approximate and no responsibility is taken for any error, omission, or mis-statement. This plan is for illustrative purposes only.



**16 Charles Street**

**Anglesea**