



15 Chatswood Drive ANGLESEA VIC

3 1 2

Elevated with picturesque views of bush clad hills, this property has a warm and peaceful character that instantly feels like home. Its split-level design creates cosy spaces and the lime washed timber cathedral ceilings add a sense of volume and space.

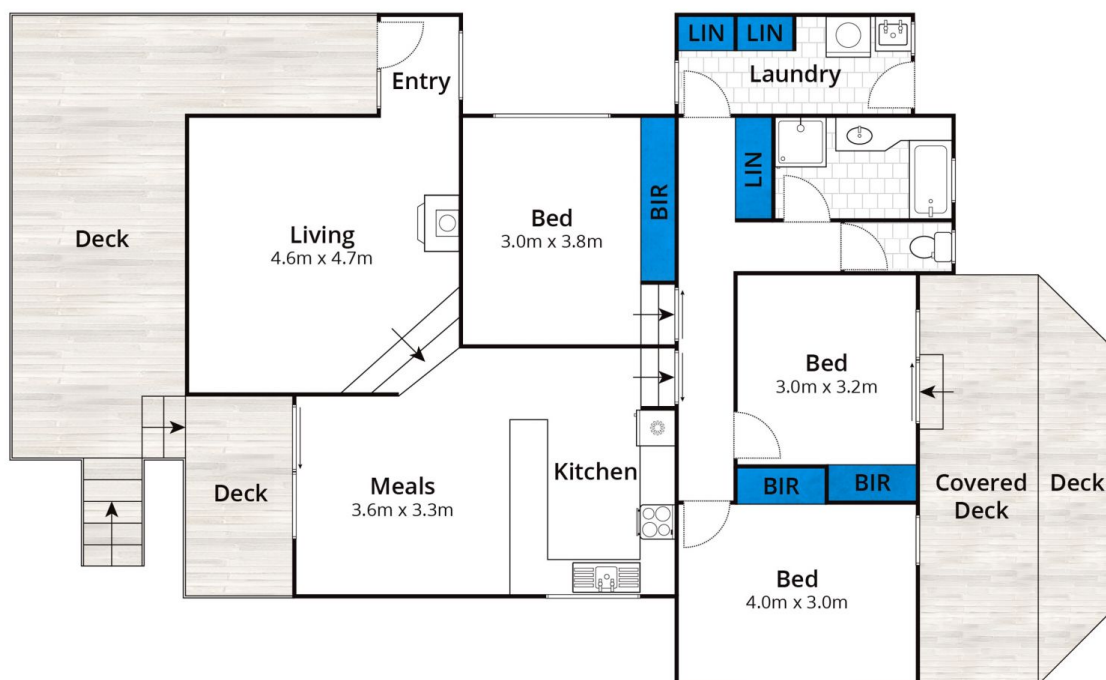
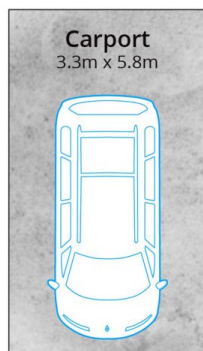
Features include a generous lounge with a freestanding log fire and framed by glass to capture the sunny leafy outlook; a large kitchen with adjacent dining that flows to outdoor entertaining on multi level decks; and beautiful hardwood floors. There are three spacious bedrooms all with built in robes. Add to this ducted heating/cooling and solar panels. Flexibility is offered by one of the bedrooms to create a second living area with access to the sunny garden with sheltered outdoor living space. Outside features a cute freestanding studio providing room to get creative,

Type : House
Land Size : 572 sqm
View : <https://www.greatoceanproperties.com.au/4781769>



Marty Maher
0352200000

[For full version visit the website](https://www.greatoceanproperties.com.au)



Whilst bwrm.com.au has made every attempt to ensure the accuracy of the floor plan contained here, measurements are approximate and no responsibility is taken for any error, omission, or mis-statement. This plan is for illustrative purposes only.

15 Chatswood Drive, Anglesea

