



## 20 Elizabeth Street ANGLESEA VIC

3  1  2 

Bursting with character, this Californian Bungalow is a unique home in a popular and peaceful location just minutes to the thriving town centre, river and beach.

Ocean views and a tree filled outlook can be enjoyed from the sunny deck and open plan kitchen/family/dining area that blends old world charm with modern convenience.

Three large bedrooms offer an abundance of space for family and friends and the separate sitting room with a log fire is the perfect spot for relaxing all year round. The original features such as Baltic pine floors, high ceilings, a wide hallway, lead-light windows and French doors are a highlight.

The generous 755sqm (approx) site has a cottage garden feel with multiple private out door living zones; space to park the caravan or boat; and secure storage too.

**Type** : House

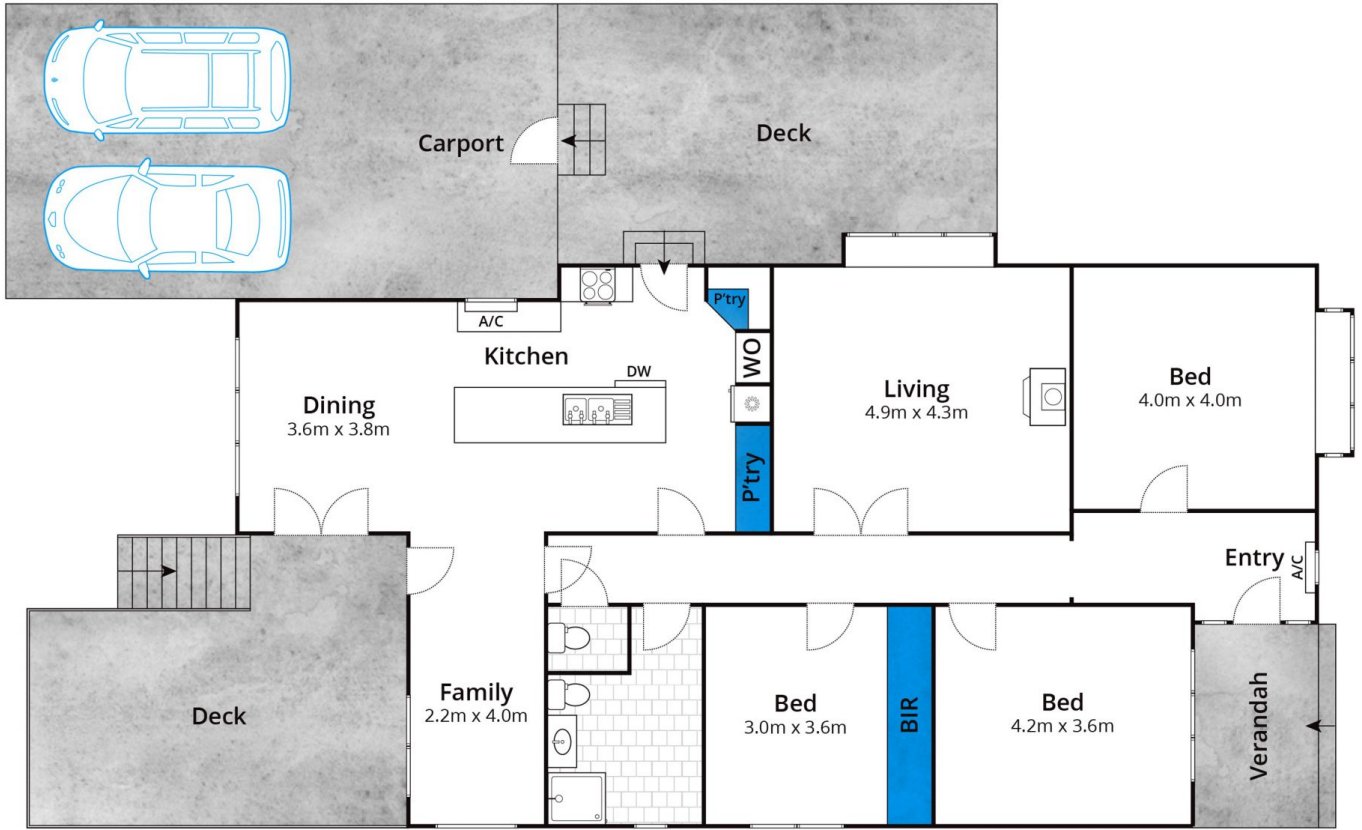
**Land Size** : 755 sqm

**View** : <https://www.greatoceanproperties.com.au/4795810>



**Marty Maher**  
0352200000

[For full version visit the website](https://www.greatoceanproperties.com.au)



Whilst [bwrn.com.au](http://bwrn.com.au) has made every attempt to ensure the accuracy of the floor plan contained here, measurements are approximate and no responsibility is taken for any error, omission, or mis-statement. This plan is for illustrative purposes only.

## 20 Elizabeth Street, Anglesea

