



28 Tenth Avenue ANGLESEA VIC

4 🛏 2 🚿 2 🚗

This coastal property is ideal for those who have been searching and waiting for a classic beach house. Located in a tightly held position of Point Roadknight and privately situated on a flat 682sqm (app) treed allotment this home represents classic beach house roots and 60's architectural heritage. With the Point Roadknight beach only minutes away, you will be on the sand and in the surf or grabbing a coffee from the kiosk within minutes.

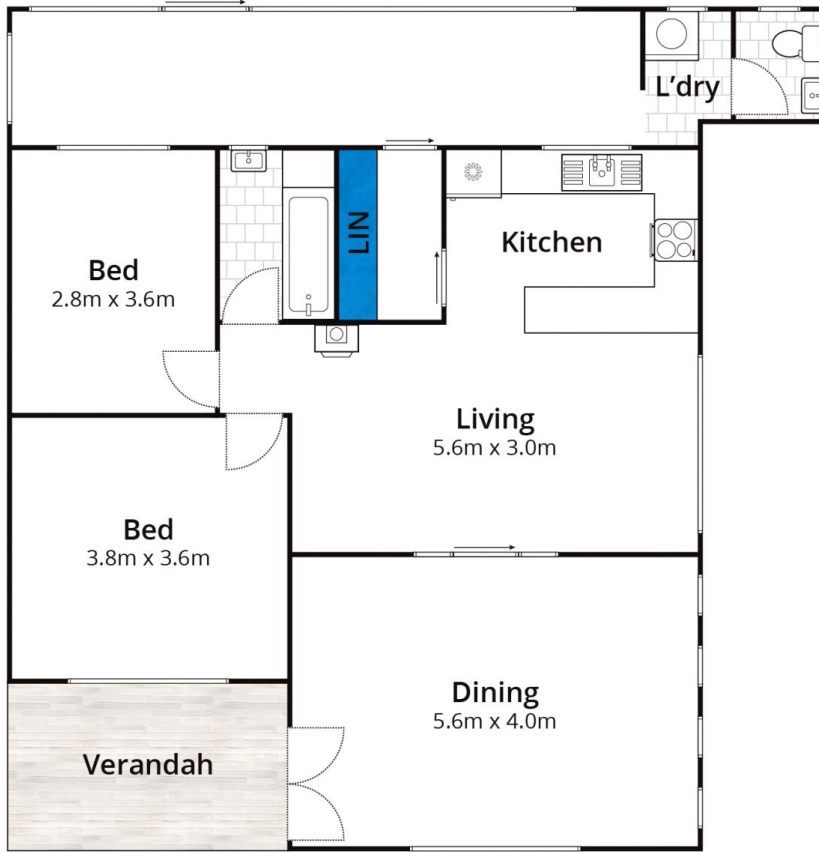
The character filled main residence features 2 generous bedrooms, timber floors, open and flowing classic kitchen/lounge area with a central wood fire place. Upon entry you are greeted with a light filled space that is utilised as the dining hub of the home featuring stone floors and expansive glazing that overlooks the grassed front yard. Add to this, a back porch, central bathroom and laundry.

Type : House
Land Size : 682 sqm
View : <https://www.greatoceanproperties.com.au/4829086>

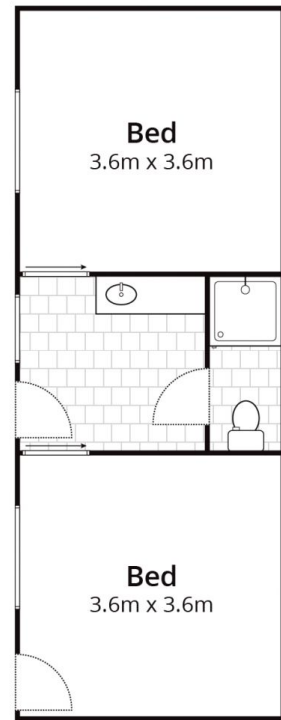


Marty Maher
0352200000

[For full version visit the website](https://www.greatoceanproperties.com.au)



Ground Floor



Bungalow
(not in position)

Whilst bwrn.com.au has made every attempt to ensure the accuracy of the floor plan contained here, measurements are approximate and no responsibility is taken for any error, omission, or mis-statement. This plan is for illustrative purposes only.

28 Tenth Avenue, Anglesea

