



13 Birkdale Close ANGLESEA VIC

4 3 2

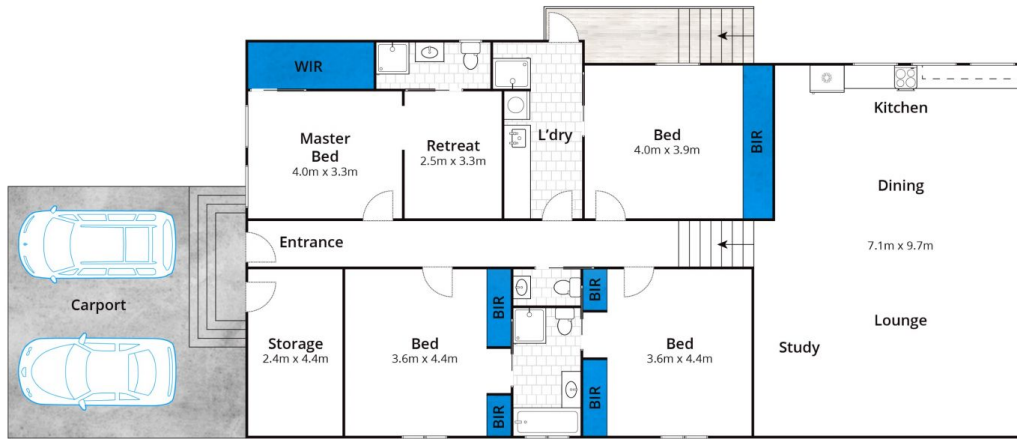
Driven by sustainability and inspired by its nature filled surrounds, this contemporary home is a creative haven. Smartly designed and quality-built in 2017 by local builders "Eco Sure?" offers restored and repurposed elements cleverly incorporated to inspire the home with heart. The open plan living zone is an absolute highlight, with soaring ply-lined ceilings and copious glazing that flood the room with natural light. This space invites relaxed living and entertaining that flows naturally out to the large timber deck area boasting a solar heated above ground pool all awhile capturing treetop and golf course views. Overlooking a paved courtyard with a fire pit, the spacious master suite includes a private sitting room; making this a perfect parent's retreat. Three additional queen sized bedrooms, with generous built in storage, all have direct

Type : House
Price : \$ 1,205,000
Land Size : 1086 sqm
View : <https://www.greatoceanproperties.com.au/5007755>

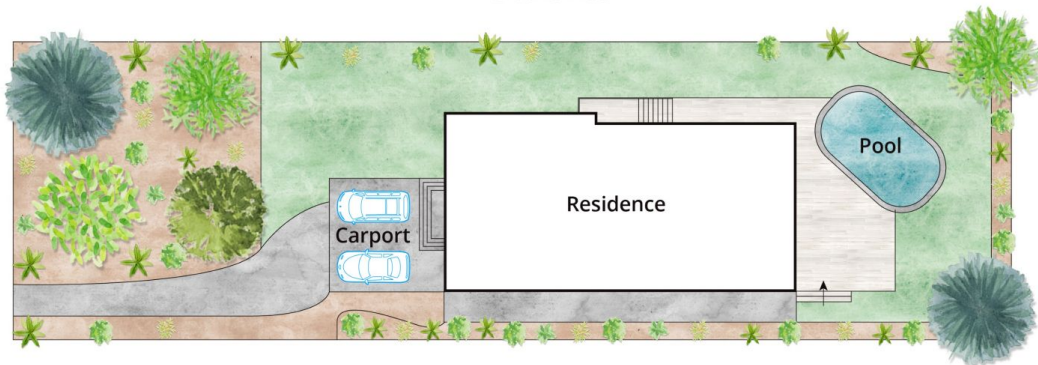


Marty Maher
0352200000

[For full version visit the website](https://www.greatoceanproperties.com.au)



Ground Floor



Site Plan

Approx House Area 202m²
Approx Land Area 1086m²

Whilst bwrm.com.au has made every attempt to ensure the accuracy of the floor plan contained here, measurements are approximate and no responsibility is taken for any error, omission, or mis-statement. This plan is for illustrative purposes only.

13 Birkdale Close, Anglesea

