



32 Onshore Drive TORQUAY VIC

3 2 2

Move straight into this exceptional 3 bed/2 bath property and enjoy the relaxed Torquay lifestyle immediately, thanks to clever design that capitalises on a northerly aspect for year round entertaining and outdoor living. Located in a beautiful gum tree lined street in a quiet Quay Estate neighbourhood, this spacious, dual living home on 634sqm is less than a minute's drive to the Dunes Shopping Village.

This impressive residence is perfectly positioned to capture abundant natural light through picture windows in high ceilings over the entertainer's kitchen. Stone bench tops, s/s appliances and a walk-in pantry overlook the open plan living/dining area. Double stacker sliding doors lead to a north facing undercover alfresco area and merbau deck. Well established, low maintenance trees and gardens (including a vegetable garden) invite local birdlife and offer

Type : House
Land Size : 634 sqm
View : <https://www.greatoceanproperties.com.au/5025960>

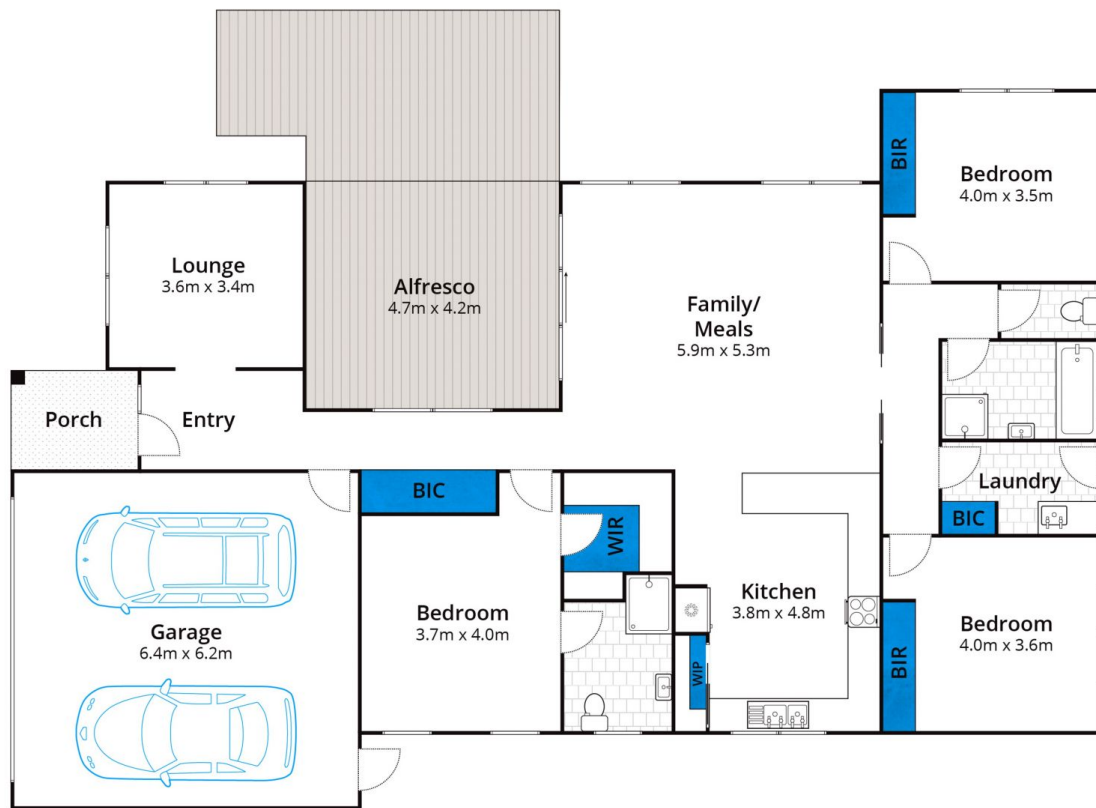


Marty Maher
0352200000



Michelle McDonald
0352631100

[For full version visit the website](https://www.greatoceanproperties.com.au)



Approx House Area 192m²

Whilst bwrm.com.au has made every attempt to ensure the accuracy of the floor plan contained here, measurements are approximate and no responsibility is taken for any error, omission, or mis-statement. This plan is for illustrative purposes only.

32 Onshore Drive, Torquay

