



## 5 Beatles Court AIREYS INLET VIC

5 2 4

This substantial 5BR home, set in the heart of the ocean side precinct and walking distance to two beaches has been crafted to provide the perfect place to gather together and love coastal life. Think easy strolls to nearby beaches, long lunches out on the cool shaded patio and lots of space to accommodate family and friends.

Set in the quietest of courts, the residence is offered over two levels. The lower level features open and light filled living and dining; and a super functional kitchen with a walk-in pantry. There are also two guest bedrooms on this level.

Upstairs the large second living area is a highlight; it is a flexible space which works well as a games room or equally well as a quiet retreat. The three bedrooms on this level enjoy a leafy outlook and the master has a walk in

**Type** : House  
**Land Size** : 1058 sqm  
**View** : <https://www.greatoceanproperties.com.au/5034711>



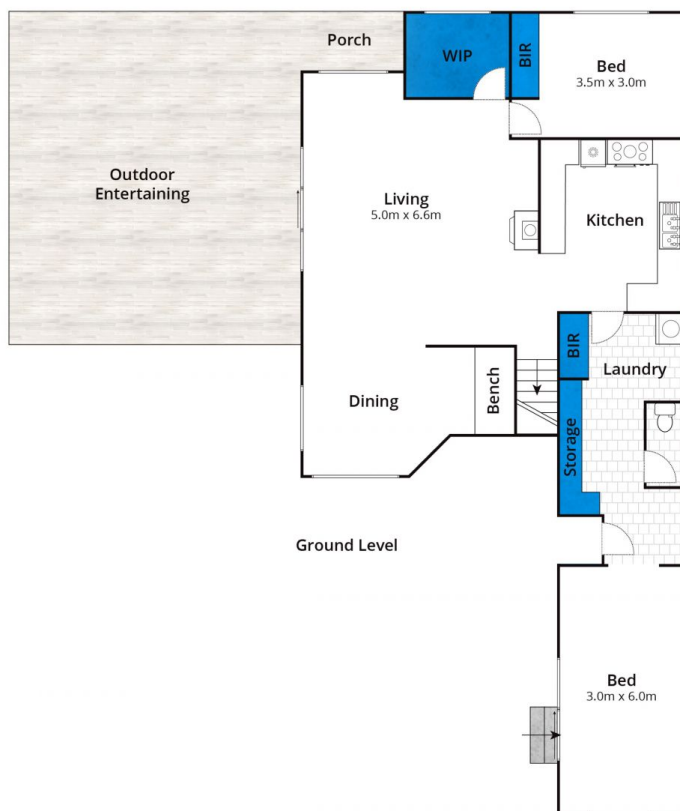
**Marty Maher**  
0352200000



**Mim Atkinson**  
0352200000

[For full version visit the website](https://www.greatoceanproperties.com.au)





Approx House Area 251m<sup>2</sup>

Whilst [bwrm.com.au](http://bwrm.com.au) has made every attempt to ensure the accuracy of the floor plan contained here, measurements are approximate and no responsibility is taken for any error, omission, or mis-statement. This plan is for illustrative purposes only.

## 5 Beatles Court, Aireys Inlet

