



**3 Neva Court TORQUAY VIC**

3 2 2

Occupying a commanding position in a quiet court location only 900 metres (approx) to the beachfront in the tightly held Wombah Park Estate, this 3 bedroom, 2 bathroom residence was architecturally designed and built by Steve Dunstan, one of Torquay's most respected builders. Cleverly created to maximise the enviable northerly aspect, this fully landscaped 737sqm haven offers resort style living and entertaining, complete with a retractable shade awning for those hot summer days, plus a fantastic in-ground solar and gas heated swim spa. Enjoy ocean glimpses from the upstairs master suite upstairs with balcony. Set well apart from the lower two bedrooms and main bathroom, this retreat with second living adjoining makes the perfect parent's sanctuary. A spacious ensuite with oversized in-situ shower and floor to

**Type** : House  
**Price** : \$ 950,000  
**Land Size** : 737 sqm  
**View** : <https://www.greatoceanproperties.com.au/5054938>

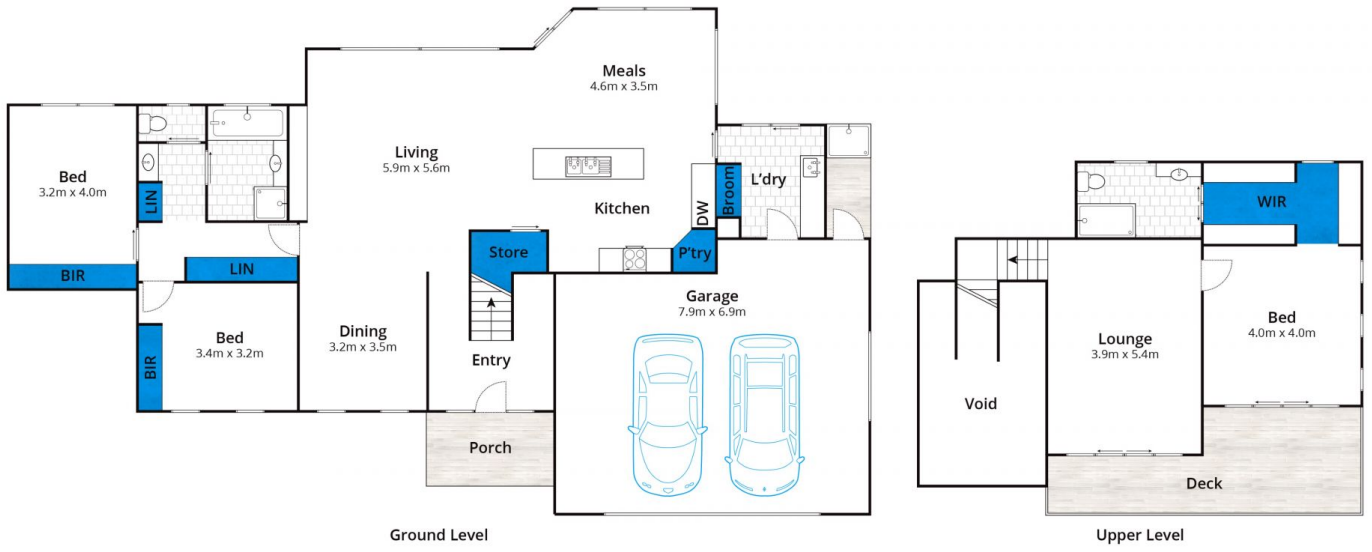


**Marty Maher**  
0352200000



**Michelle McDonald**  
0352631100

[For full version visit the website](https://www.greatoceanproperties.com.au)



Approx House Area 264m<sup>2</sup>

Whilst [bwrm.com.au](http://bwrm.com.au) has made every attempt to ensure the accuracy of the floor plan contained here, measurements are approximate and no responsibility is taken for any error, omission, or mis-statement. This plan is for illustrative purposes only.

### 3 Neva Court, Torquay

