



**510 Flaxbournes Road PARAPARAP VIC**

4 3 3

Calmness descends instantly as you enter this 20acre (approx) estate and the busyness of life quite literally drops away.

The substantial residence has been perfectly placed to capture peaceful views with its full length orienting to North.

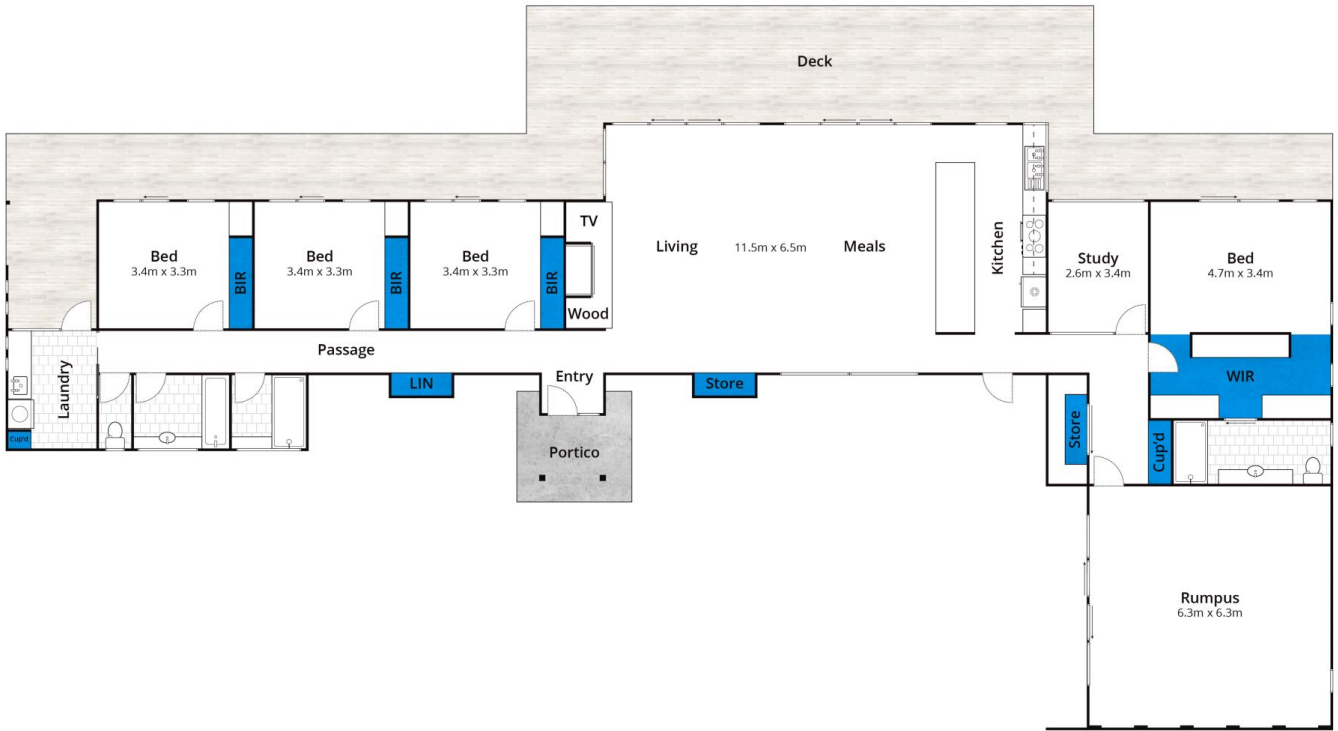
The light filled living zone embraces the changing seasons with intelligent passive climate control and an open fire adding charm. Effortless connection to extensive outdoor entertaining makes this home the obvious choice when gathering the crowds or for quietly winding down. Each of the four bedrooms boasts a picturesque outlook while the master suite enjoys deck access, extensive storage and an en-suite. The additional separate living area offers a flexible space for relaxing or for overflow accommodation. Renowned surf coast building designer, Mark Gleeson's

**Type** : House  
**Land Size** : 20 Acres  
**View** : <https://www.greatoceanproperties.com.au/5103851>



**Marty Maher**  
**0352200000**

[For full version visit the website](https://www.greatoceanproperties.com.au)



Whilst [bwrm.com.au](http://bwrm.com.au) has made every attempt to ensure the accuracy of the floor plan contained here, measurements are approximate and no responsibility is taken for any error, omission, or mis-statement. This plan is for illustrative purposes only.

## 510 Flaxbournes Road, Paraparap

