



5 Fifth Avenue ANGLESEA VIC

4 4 2

OFFERS REQUIRED BY 18 NOVEMBER 2019

Embrace tranquil coastal excellence in a home that showcases exceptional design to soothe the soul and excite the senses. Offered over two spacious levels, this home epitomizes renowned designer Mark Gleeson's trademark attention to detail and exceptional use of natural light. Enjoyable in its entirety, the upper level open plan living, kitchen and dining as well as the generous master suite all capture the beautiful outlook of ocean, mature native trees and even leafy framed peeks of breaking surf. A second bedroom on this level, a sun filled sitting room and large deck make the most of the north-facing outlook over the hand placed landscaped gardens. This level is fully air conditioned with the added benefit of the elevated

Type : House
Land Size : 713 sqm
View : <https://www.greatoceanproperties.com.au/5106217>

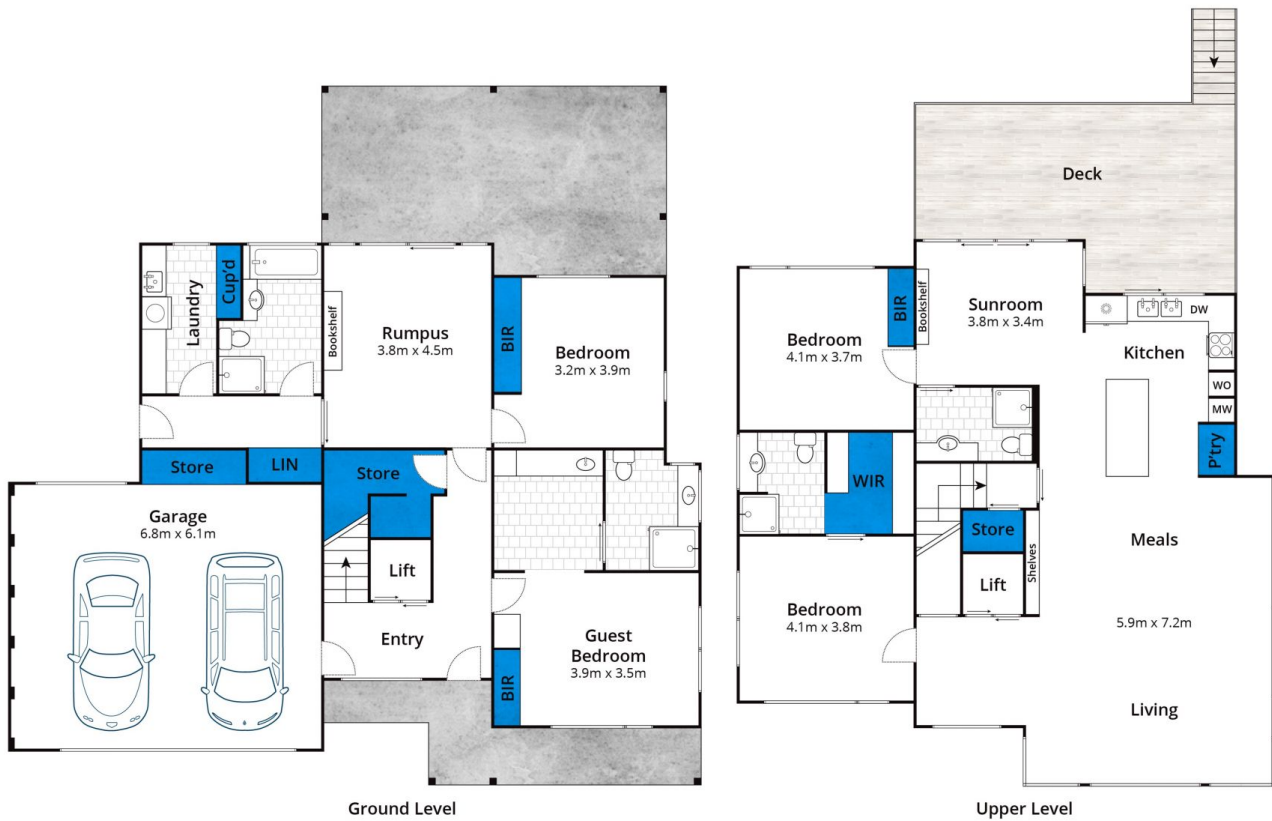


Marty Maher
0352200000

[For full version visit the website](https://www.greatoceanproperties.com.au)

<https://www.greatoceanproperties.com.au>

5220 0000



Approx House Area 283m²

Whilst bwrm.com.au has made every attempt to ensure the accuracy of the floor plan contained here, measurements are approximate and no responsibility is taken for any error, omission, or mis-statement. This plan is for illustrative purposes only.

5 Fifth Avenue, Anglesea