



5 Paton Street ANGLESEA VIC

4 3 2

Capturing the essence of life on the coast this contemporary home tucked away in a private & peaceful locale boasting a truly tranquil outlook is this impeccably presented and large scale family home.

One of the main highlights of this split-level residence is the open plan living zone on the upper most level. Spacious and sunny, with a sleek and modern kitchen plus a study nook hidden behind sliding doors, this space is light filled with ocean views framed through the treetops. A north facing deck, purpose built to create sheltered outdoor living, is the perfect place to unwind. Four generous bedrooms, central smart bathroom is found on the lower levels including the master with walk in robe and en-suite. Add to this a second separate living area, the ideal retreat space for children or for guests; they will love the easy

Type : House
Land Size : 461 sqm
View : <https://www.greatoceanproperties.com.au/5109214>

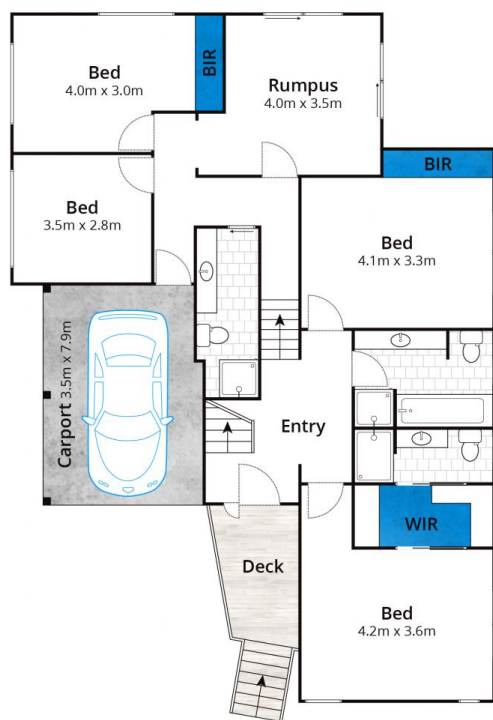


Marty Maher
0352200000

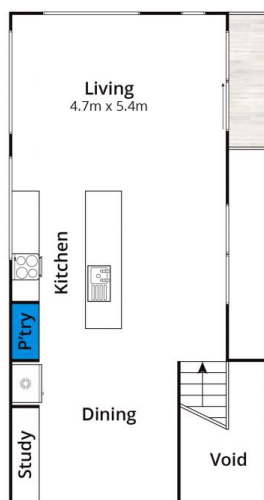
[For full version visit the website](https://www.greatoceanproperties.com.au)

<https://www.greatoceanproperties.com.au>

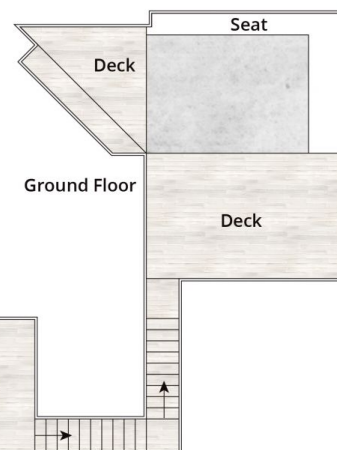
5220 0000



Ground Floor



First Floor



Whilst bwrn.com.au has made every attempt to ensure the accuracy of the floor plan contained here, measurements are approximate and no responsibility is taken for any error, omission, or mis-statement. This plan is for illustrative purposes only.

5 Paton Street, Anglesea

