



14 Sixth Avenue ANGLESEA VIC

4 2 4

This stunning transformation from beach shack to heart filled contemporary home truly epitomises relaxed coastal living. The light filled and spacious open plan living zone is the focal point of the home. Oversize stackable sliders push open to create a seamless connection to outdoor entertaining and the lush garden beyond. Think endless summer evenings with family and friends after a day at the beach. Winters are for soaking up the sun on the built-in daybed or for getting cosy beside the log fire. Upstairs the master suite, including ensuite and walk-through robe is a highlight with its ocean views and bespoke timber shutters that welcome in the sea breeze. The adjacent bedroom offers flexibility as a second living area with a north-facing balcony; and two additional bedrooms plus study are located downstairs.

Type : House
Land Size : 1362 sqm
View : <https://www.greatoceanproperties.com.au/5153687>

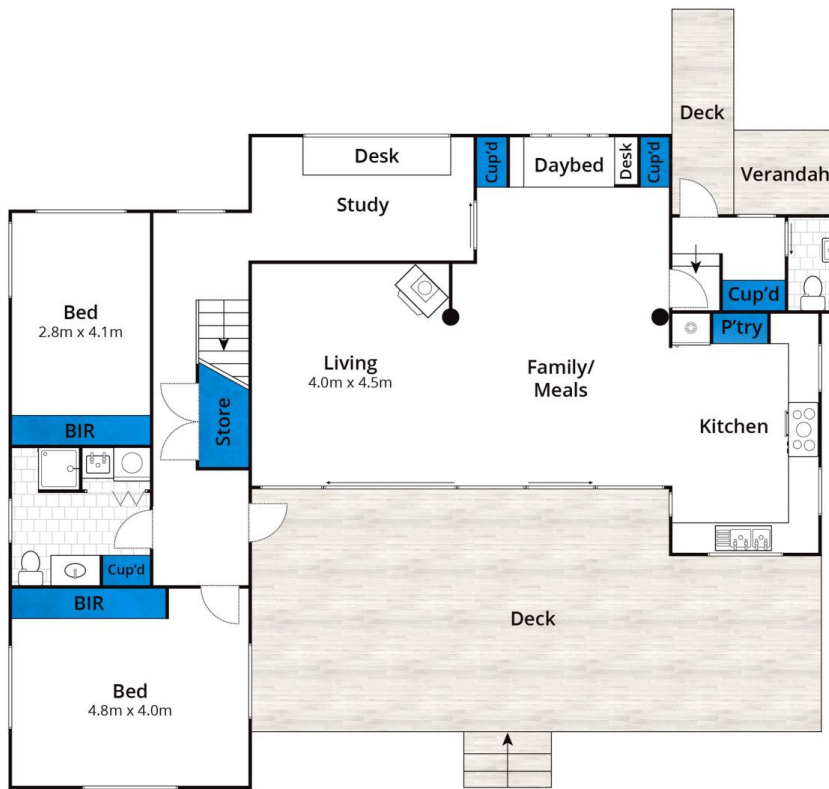


Marty Maher
0352200000

[For full version visit the website](https://www.greatoceanproperties.com.au)

<https://www.greatoceanproperties.com.au>

5220 0000



Ground Floor



First Floor

Approx House Area 195m²

Whilst bwrm.com.au has made every attempt to ensure the accuracy of the floor plan contained here, measurements are approximate and no responsibility is taken for any error, omission, or mis-statement. This plan is for illustrative purposes only.

14 Sixth Avenue, Anglesea

