

31 Pintail Drive TORQUAY VIC

4 2 2

With an impressive, functional floorplan & contemporary design aesthetics, this home offers the ideal base for modern family living. Located in the popular Zeally Sands Estate, this 4BR home includes a private master retreat with walk in robe, spacious en-suite & separate toilet. Boasting 2 living spaces & perfectly positioned for an abundance of natural light with north-facing open plan living, meals & kitchen, the family can come together to connect, whilst enjoying the privacy of zoned sleeping quarters.

The central family bathroom echoes the same quality features & floor to ceiling tiles as the en suite, with the addition of a bath & separate toilet in the west wing. Soothing, neutral interior tones meet rich merbau decking & graphite coloured brickwork, lawn & beautiful landscaping

Type : House
Price : \$ 835,000
Land Size : 532 sqm
View : <https://www.greatoceanproperties.com.au/5156315>

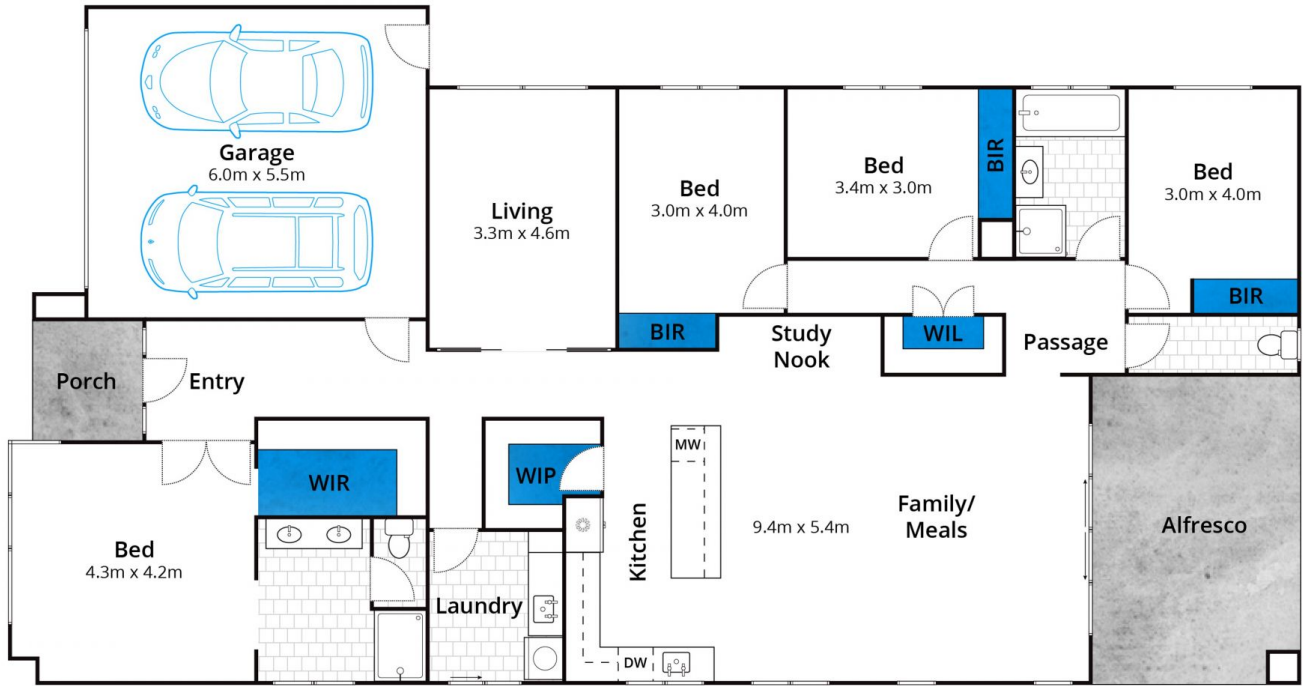


Marty Maher
0352200000



Michelle McDonald
0352631100

[For full version visit the website](https://www.greatoceanproperties.com.au)



Approx. Area 216m²

Whilst bwrn.com.au has made every attempt to ensure the accuracy of the floor plan contained here, measurements are approximate and no responsibility is taken for any error, omission, or mis-statement. This plan is for illustrative purposes only.

31 Pintail Drive, Torquay

