



1A Inverloch Street ANGLESEA VIC

3 3 2

A stunning harmony of contemporary design, generous living zones, and natural light that all comes together brilliantly to embrace the very essence of a coastal living experience in this brand-new beach house in a handy location. Featuring premium oak flooring, quality fixture and fittings throughout, caesarstone benchtops, Bosch appliances and soft closing cabinetry, fully tiled bathrooms, solar hot water and water tanks.

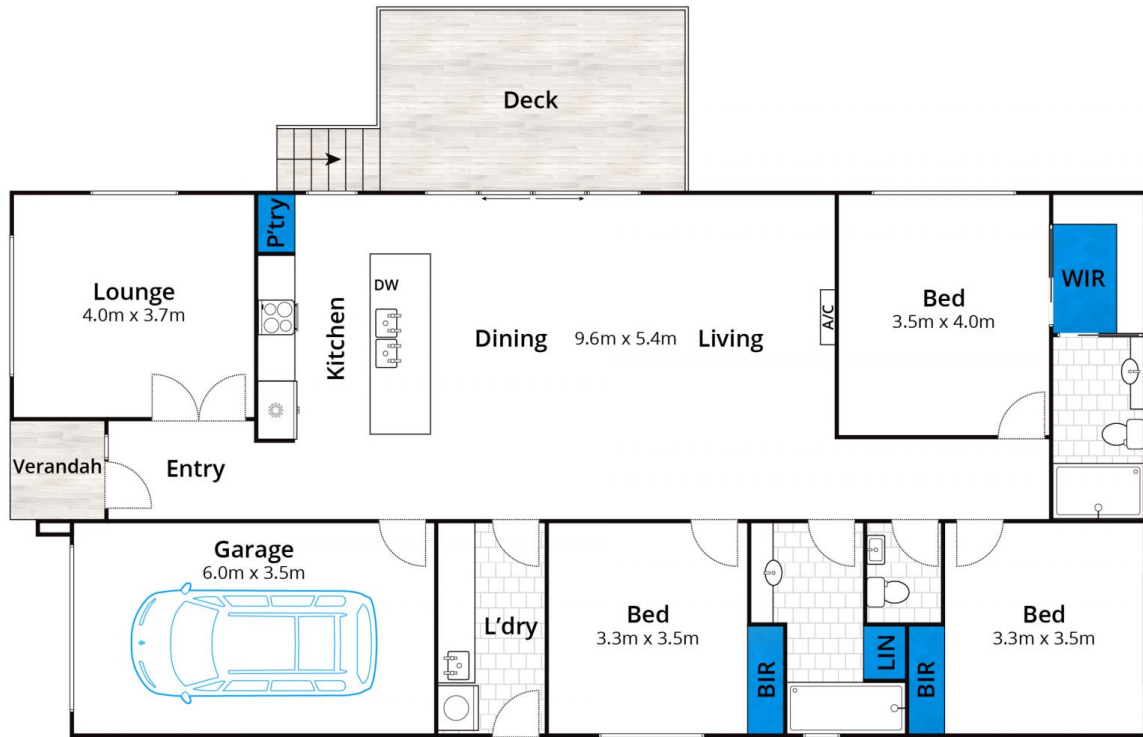
The single level layout flows exceptionally well and makes the most of the leafy outlook from the sunny front lounge room or a perfect space for a home office. The adjacent open plan living zone is light and bright with soaring pitched ceilings and easy connection to outdoor living on a sheltered deck. This is the perfect spot to enjoy views of

**Type** : House  
**Land Size** : 473 sqm  
**View** : <https://www.greateoceanproperties.com.au/5210701>



**Marty Maher**  
**0352200000**

[For full version visit the website](https://www.greateoceanproperties.com.au)



Whilst [bwrn.com.au](http://bwrn.com.au) has made every attempt to ensure the accuracy of the floor plan contained here, measurements are approximate and no responsibility is taken for any error, omission, or mis-statement. This plan is for illustrative purposes only.

## 1A Inverloch Street, Anglesea

