



## 540 Skenes Creek Road APOLLO BAY VIC

7 3 5

Magnificent, elevated 11ha (27 acre) property, on the Melbourne side of Apollo Bay, with two beautiful houses in excellent condition, both with unmatched, panoramic, sea and land scape views and both with excellent access.

The property boasts a mixture of rainforest (complete with private waterfall) and designed pasture to promote and protect these majestic hilltop views and protect and seclude the two houses from each other.

The property is 10 minutes from Apollo Bay, an hour and a quarter from Geelong and two and a half hours from Melbourne.

House one is a multi-levelled and architect designed, Western Red Cedar, weatherboard home with commanding views from every room; down a dramatic valley, out to sea

[For full version visit the website](https://www.greatoceanproperties.com.au)

**Type** : House  
**Price** : \$ 1,700,000  
**Land Size** : 27 Acres  
**View** : <https://www.greatoceanproperties.com.au/5241232>



**Gary Van Someren**  
**0418550049**

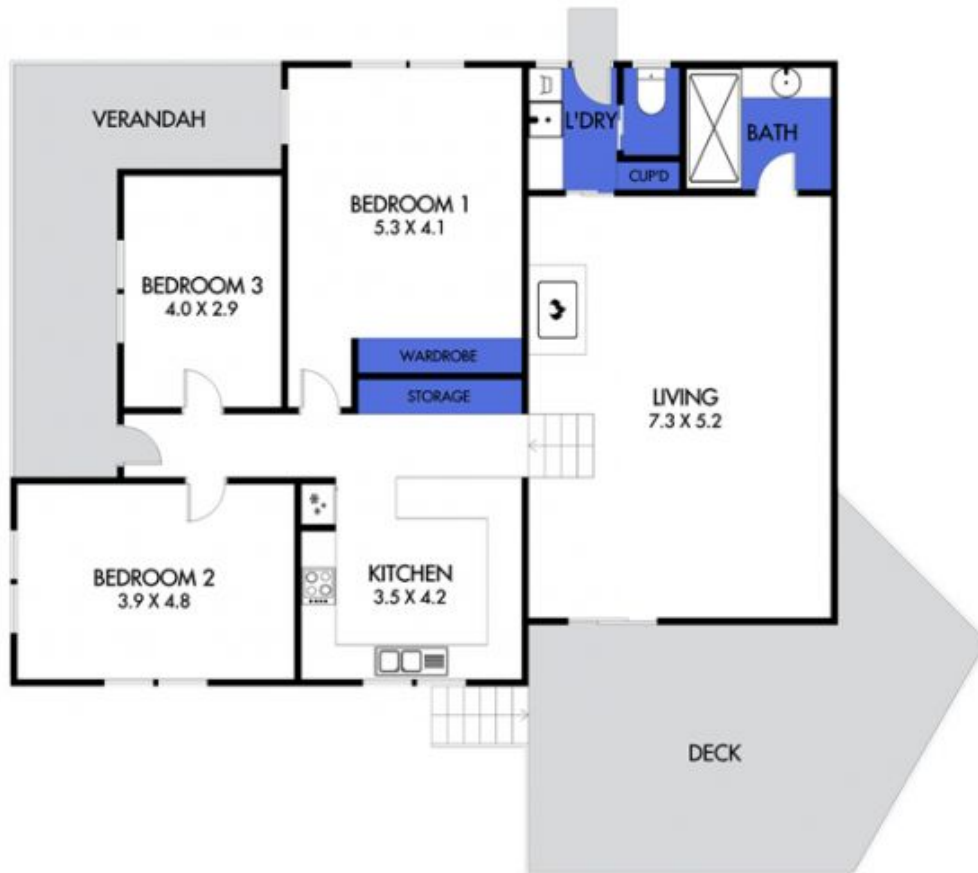
<https://www.greatoceanproperties.com.au>

03 52377 366





DISCLAIMER: PLEASE NOTE PLANS ARE INDICATIVE ONLY AND NOT DRAWN TO EXACT SCALE. ALL DIMENSIONS ARE APPROXIMATE. POTENTIAL BUYERS SHOULD VIEW THE PROPERTY IN PERSON.



DISCLAIMER: PLEASE NOTE PLANS ARE INDICATIVE ONLY AND NOT DRAWN TO EXACT SCALE. ALL DIMENSIONS ARE APPROXIMATE.  
POTENTIAL BUYERS SHOULD VIEW THE PROPERTY IN PERSON.