



31 Russell Avenue ANGLESEA VIC

3 2 2

Nestled into its flourishing gardens with a bright and breezy feel, this single storey beach house offers simplicity and easy living. The heart of this home is its light filled open plan living zone where raked ceilings, high windows and a crisp white palette create an airy and summery vibe. While the freestanding log fire promises to keep things cosy in winter. Large timber framed sliding doors open up the space to the sheltered north facing deck, which is the perfect spot to unwind and entertain family and friends. There are three bedrooms in total, each enjoys a garden outlook and the master suite includes a walk-in robe and en-suite.

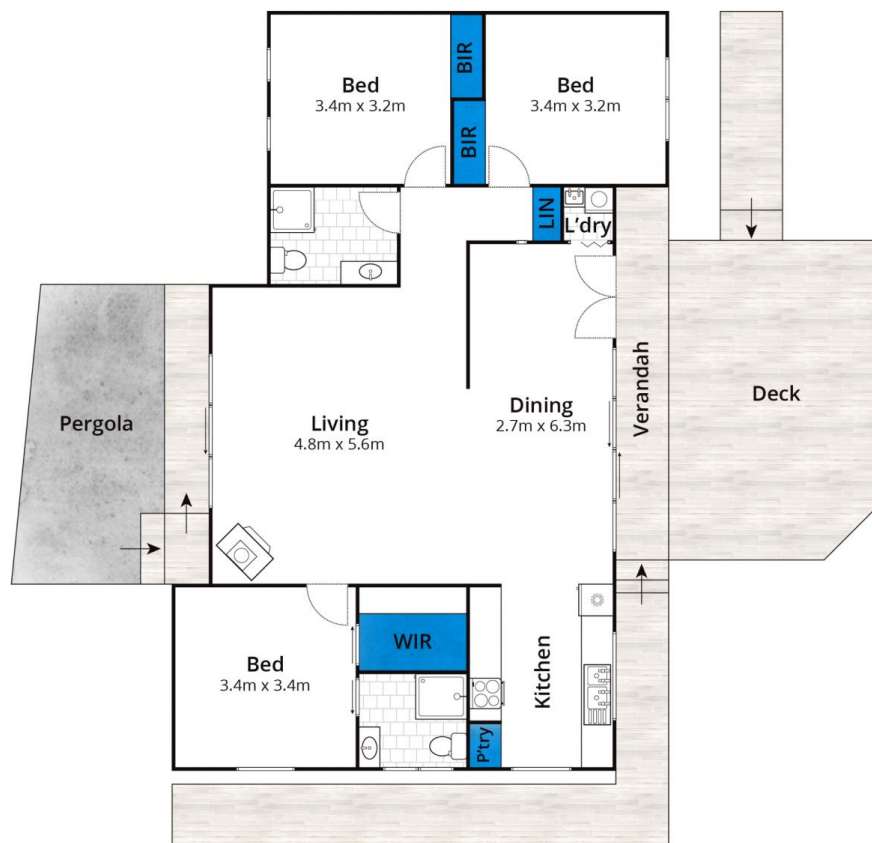
The 568sqm (app) grounds offer a variety of leafy nooks to appreciate as well as herb and veggie plots and mature fruit trees. There is space to extend the footprint if needed

[For full version visit the website](https://www.greatoceanproperties.com.au/5254540)

Type : House
Price : \$ 910,000
Land Size : 568 sqm
View : <https://www.greatoceanproperties.com.au/5254540>



Marty Maher
0352200000



Approx House Area 109m²

Whilst bwrn.com.au has made every attempt to ensure the accuracy of the floor plan contained here, measurements are approximate and no responsibility is taken for any error, omission, or mis-statement. This plan is for illustrative purposes only.

31 Russell Avenue, Anglesea

