



18 Chatswood Drive ANGLESEA VIC

3  1  2 

Positioned in an enviable location, in easy walking distance to shopping, dining, river and beaches via the reserve walking track at the rear of the property. This well presented home offers an abundant feeling of space & light beneath high vaulted ceilings and serenity with the Kuarka Dorla nature reserve at your doorstep. There is ample accommodation consisting of three bedrooms and a central bathroom with shower. The open plan kitchen/living, and dining opens to the private sunny deck for easy entertaining.

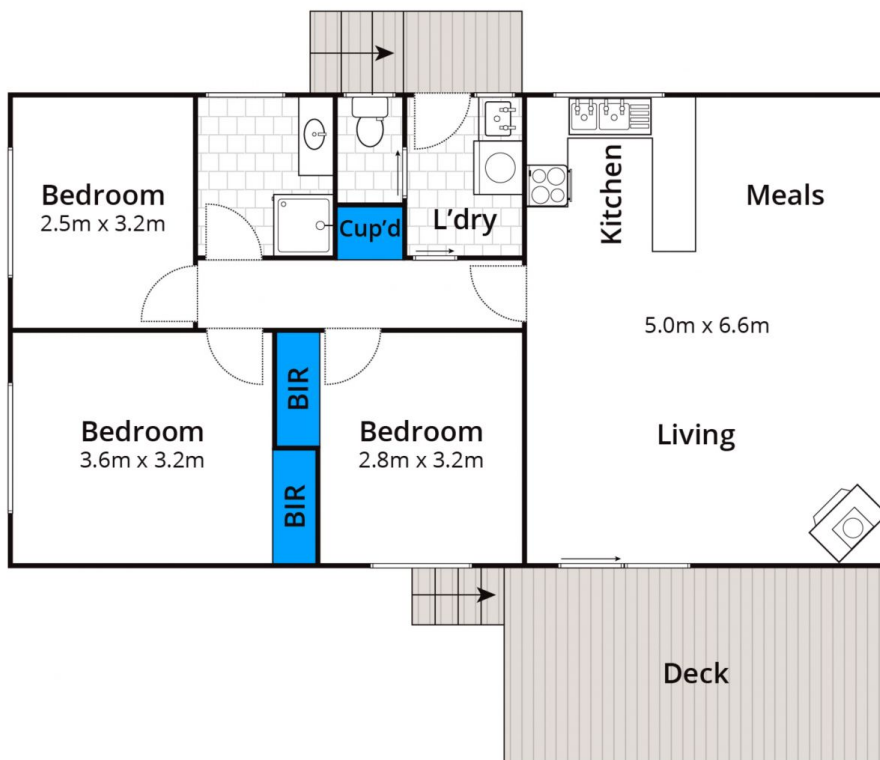
Set on a beautiful treed 599sqm (app) allotment, low maintenance generous backyard, neat established gardens and complete with a garden shed. Perfect for family living, as a downsizer, investment or beach house. Charming in every way, make it yours today!

[For full version visit the website](https://www.greatoceanproperties.com.au/5256469)

Type : House
Price : \$ 760,000
Land Size : 599 sqm
View : <https://www.greatoceanproperties.com.au/5256469>



Marty Maher
0352200000



Approx House Area 79m²

Whilst bwrn.com.au has made every attempt to ensure the accuracy of the floor plan contained here, measurements are approximate and no responsibility is taken for any error, omission, or mis-statement. This plan is for illustrative purposes only.

18 Chatswood Drive, Anglesea

