



63 Manna Gum Drive TORQUAY VIC

4 2 2

Positioned in arguably the best location in the ever-popular Ocean Views Estate, this 4-bedroom Le Maitre-built home boasts one of the most impressive panoramic vista's in the region. Oriented to capitalise on its elevated position, with whitewater views to Jan Juc from the sizable master suite, you will be captivated by the ocean views that span from Torquay to Port Phillip Heads & the East Coast's distant shores. This double storey design offers a desirable floorplan to suit a family lifestyle, with large upper & lower living areas plus multiple outdoor entertaining spaces for all seasons. The master retreat enjoys privacy away from the three other lower level bedrooms & central bathroom, complete with a walk-in robe, spacious en suite with Italian tiles & spa bath, that are concealed behind floor to ceiling mirrored sliding doors. The Rosewood timber kitchen has

Type : House
Land Size : 702 sqm
View : <https://www.greatoceanproperties.com.au/5286322>

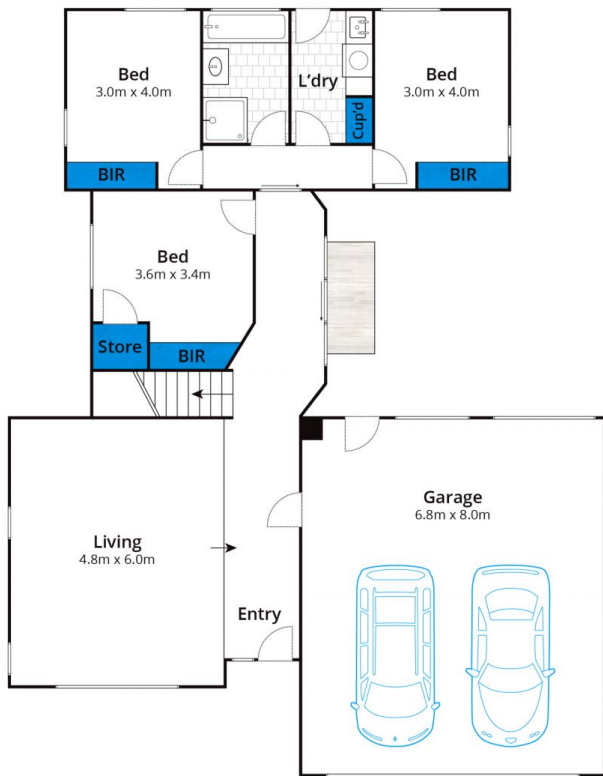


Marty Maher
0352200000

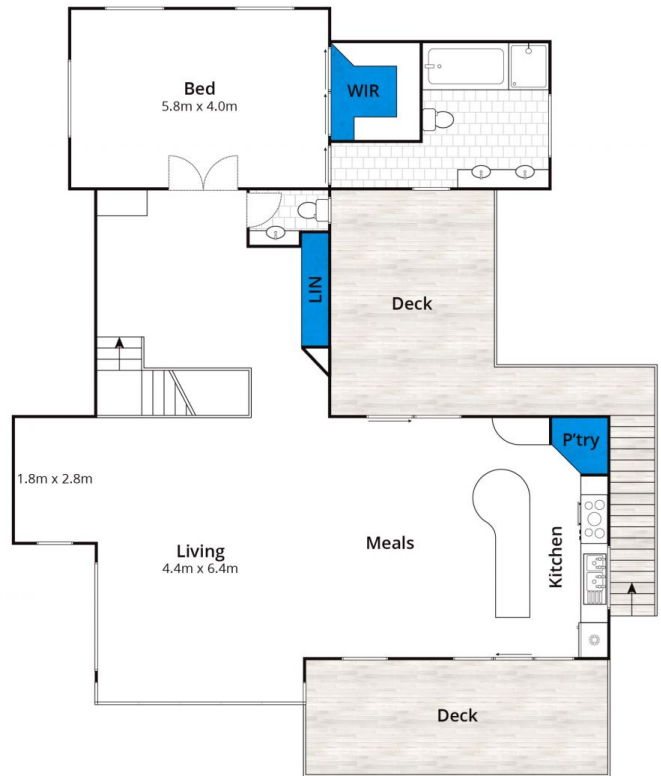


Michelle McDonald
0352631100

[For full version visit the website](https://www.greatoceanproperties.com.au)



Ground Floor



First Floor

Approx House Area 301m²

Whilst bwrn.com.au has made every attempt to ensure the accuracy of the floor plan contained here, measurements are approximate and no responsibility is taken for any error, omission, or mis-statement. This plan is for illustrative purposes only.

63 Manna Gum Drive, Torquay

