



2 Niblick Street ANGLESEA VIC

3 1 2

This is classic Anglesea beach house living. Original, character and potential filled with the 18th fairway in the back garden, this property is quietly tucked away in a peaceful enclave.

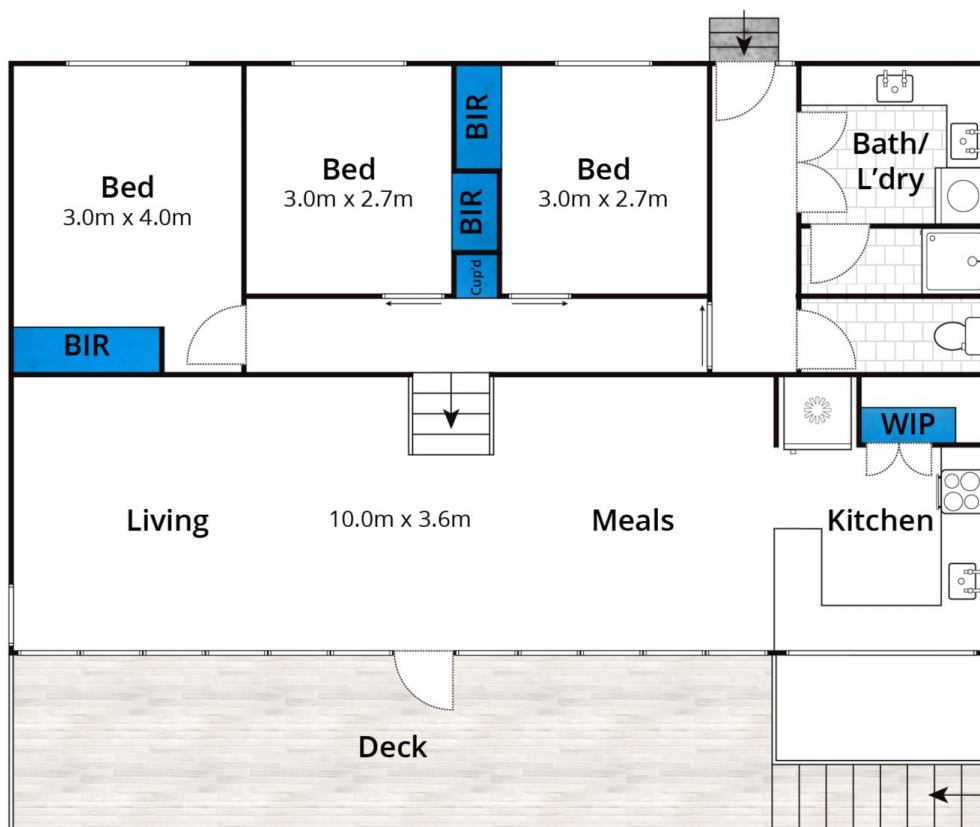
Situated on a generous 642sqm (approx) allotment abundant with native flora, the split-level home is a blank canvas. It features sunny open plan living with a north facing aspect and tranquil tree filled views. Pitched ceilings with exposed timber beams add volume and charm, while the glass doors on to the sunny deck guarantee easy flow and a connection to outdoor living. All three bedrooms include built in robes and enjoy a garden outlook. A family bathroom and large laundry complete the floor plan. Outside the highlights include a carport, plentiful off-street parking and secure storage too. The easy-care gardens

Type : House
Land Size : 642 sqm
View : <https://www.greatoceanproperties.com.au/5286429>



Marty Maher
0352200000

[For full version visit the website](https://www.greatoceanproperties.com.au)



Approx House Area 100m²

Whilst bwrm.com.au has made every attempt to ensure the accuracy of the floor plan contained here, measurements are approximate and no responsibility is taken for any error, omission, or mis-statement. This plan is for illustrative purposes only.

2 Niblick Street, Anglesea

