



46 Jackson Street ANGLESEA VIC

4 3 2

This superbly designed, nearly new home transitions effortlessly from single level living to an expansive two storey home that is perfect to share with guests. Its ethos prioritises sustainability without compromising on quality or good looks.

Downstairs features a generous open plan living zone where stackable sliding doors open up to sunny north facing courtyard, bringing the outdoors in. The space is light filled and airy and provides the ideal backdrop for easy entertaining and everyday life. 3-metre-high ceilings create volume and the log fire adds cosy appeal. With its plentiful storage, quality appliances and adjacent butler's pantry/laundry, the galley style kitchen is all about ease and flow creating a family hub. Both the master and second bedroom on this level offer a spacious retreat with an

Type : House
Land Size : 591 sqm
View : <https://www.greatoceanproperties.com.au/5287849>

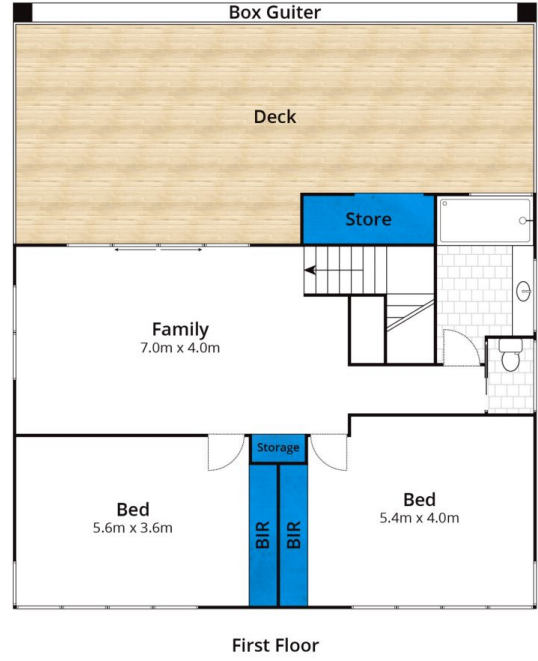
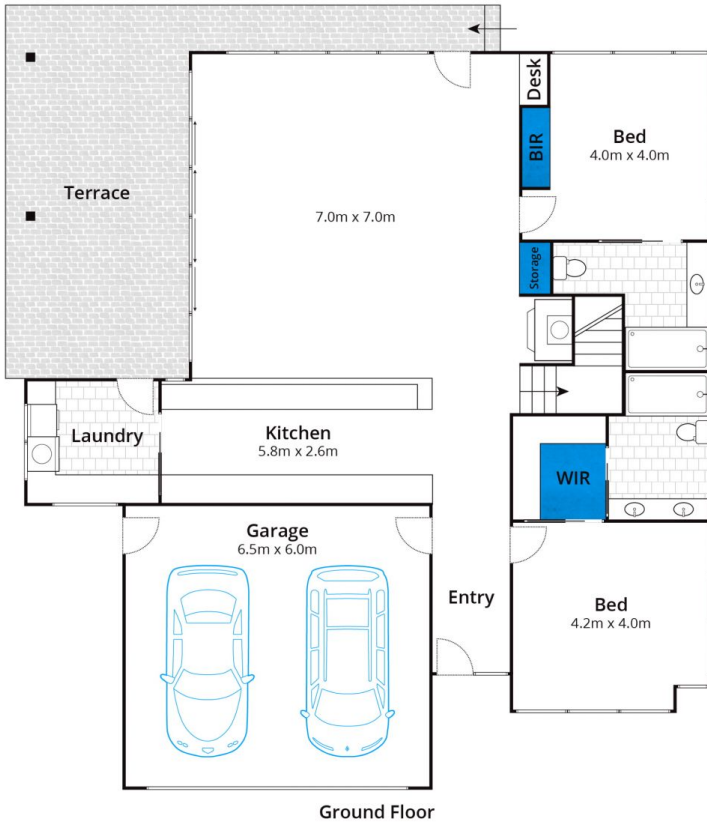


Marty Maher
0352200000

[For full version visit the website](https://www.greatoceanproperties.com.au)

<https://www.greatoceanproperties.com.au>

5220 0000



Approx House Area 270m²

Whilst bwrn.com.au has made every attempt to ensure the accuracy of the floor plan contained here, measurements are approximate and no responsibility is taken for any error, omission, or mis-statement. This plan is for illustrative purposes only.

46 Jackson Street, Anglesea

