



**19 Lialeeta Road FAIRHAVEN VIC**

3 3 2

Offers required by 23 March 2020

Taking fully advantage of its elevated position, this beautifully presented property enjoys a simply stunning panoramic outlook. The high quality view from the 3 bedroom, 3 bathroom (all bedrooms have en-suites) residence captures many picturesque elements that include the ocean, breaking surf, the iconic Split Point lighthouse and the Aireys Inlet river valley. The excellent position is one of Fairhaven's most sought after, not only for the view but because of the excellent access to the magnificent Fairhaven Beach and popular surf club. Set on a substantial 976sqm (approx) allotment, the residence is ideal as a lifestyle property with a living area on both levels and large front and rear sun decks, allowing all family members to find their space and move around to capture

**Type** : House  
**Price** : \$ 1,650,000  
**Land Size** : 976 sqm  
**View** : <https://www.greatoceanproperties.com.au/5300950>

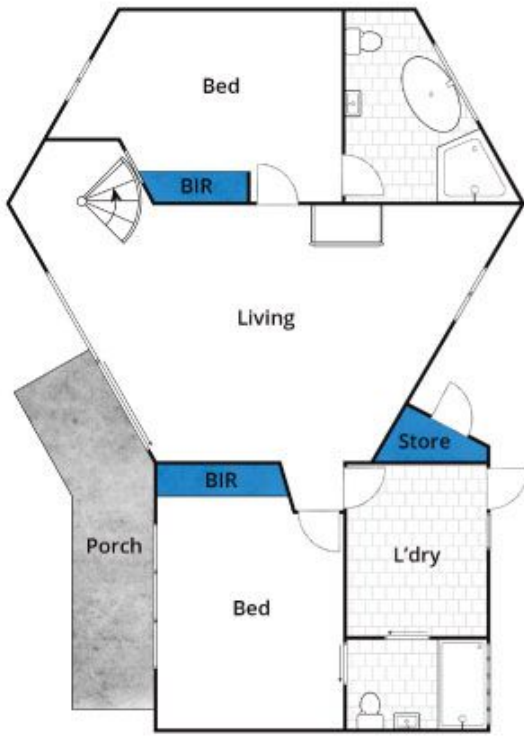


**Marty Maher**  
0352200000

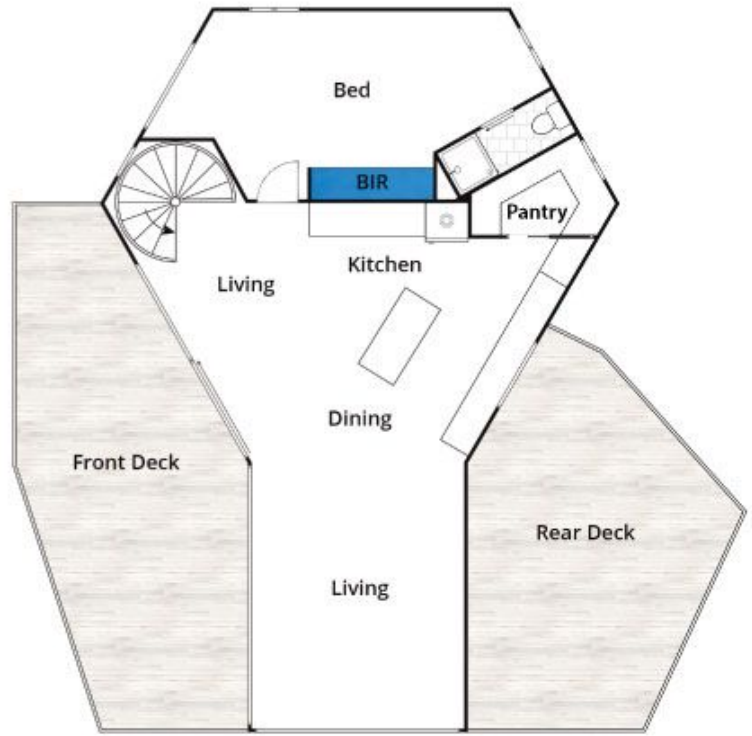


**Mim Atkinson**  
0352200000

[For full version visit the website](https://www.greatoceanproperties.com.au)



Ground Floor



First Floor

Approx. Area 180m<sup>2</sup>

While [www.lbrm.com.au](http://www.lbrm.com.au) has made every attempt to ensure the accuracy of the floor plan contained here, measurements are approximate and no responsibility is taken for any error, omission, or mis-statement. This plan is for illustrative purposes only.

## 19 Lialeeta Road, Fairhaven

