



**36 Jackson Street ANGLESEA VIC**

4 3 4

PRIVATE INSPECTION OR VIRTUAL TOUR WELCOME

Full of potential, with tranquil tree filled views It would be hard to find a more solid home than this in Anglesea. Large-scale and perfectly positioned on a generous 859sqm (approx) allotment just a short walk to the beach, this quality home is graced with supreme family functionality with versatility and ease of living.

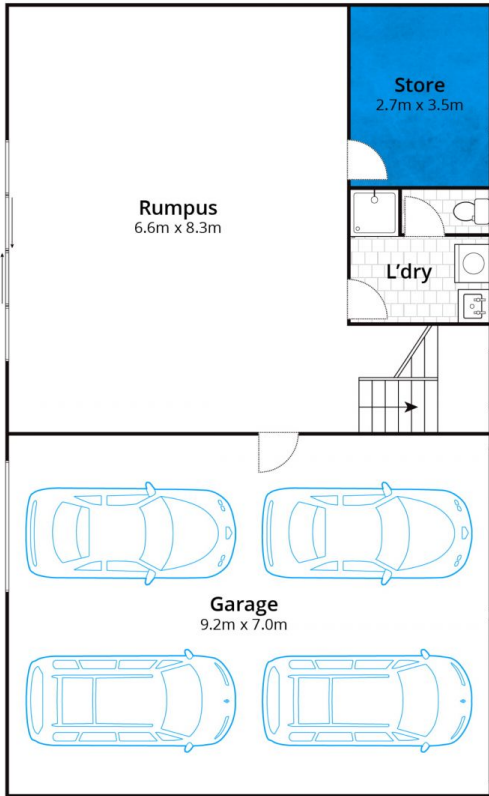
Upstairs the kitchen and dining area provides a spacious central hub to gather together with family and friends. The extensive kitchen, with solid timber bench tops, has plentiful storage and workspace. There is an appealing leafy outlook and easy connection to outdoor living from both the dining and separate living zone; where timber wall panelling adds richness, and soaring pitched ceilings add

**Type** : House  
**Land Size** : 859 sqm  
**View** : <https://www.greatoceanproperties.com.au/5321997>

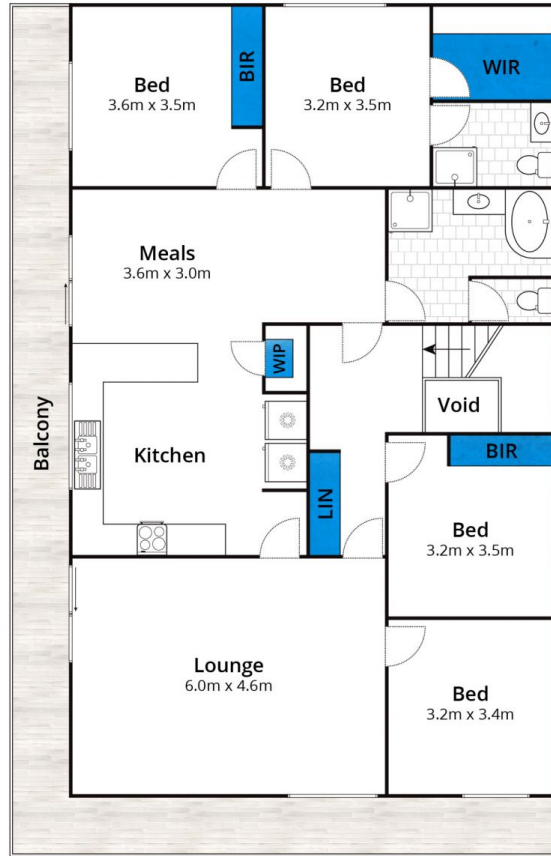


**Marty Maher**  
**0352200000**

[For full version visit the website](https://www.greatoceanproperties.com.au)



Ground Floor



First Floor

Approx House Area 290m<sup>2</sup>

Whilst [bwrn.com.au](http://bwrn.com.au) has made every attempt to ensure the accuracy of the floor plan contained here, measurements are approximate and no responsibility is taken for any error, omission, or mis-statement. This plan is for illustrative purposes only.

**36 Jackson Street, Anglesea**

