



18 Chatswood Drive ANGLESEA VIC

3  1  2 

This well maintained cedar cottage is situated in a quiet location with direct access to stunning Kuarka Dorla Nature Reserve and walking tracks. It features open plan living with meals area and kitchen, all with a peaceful tree filled outlook. Pitched timber lined ceilings create a feeling of spaciousness and the freestanding wood fire, split system and ceiling fan keeps things comfortable all year round. There are three good sized bedrooms (two with built in robes), a bathroom with shower and laundry with separate WC. Large windows let in plentiful natural light and the decor is neutral and contemporary. The home is wired for Foxtel.

Outdoor entertaining choices include a covered deck and a sunny courtyard. The large garden is low maintenance and

Type : House

View : <https://www.greatoceanproperties.com.au/5338152>

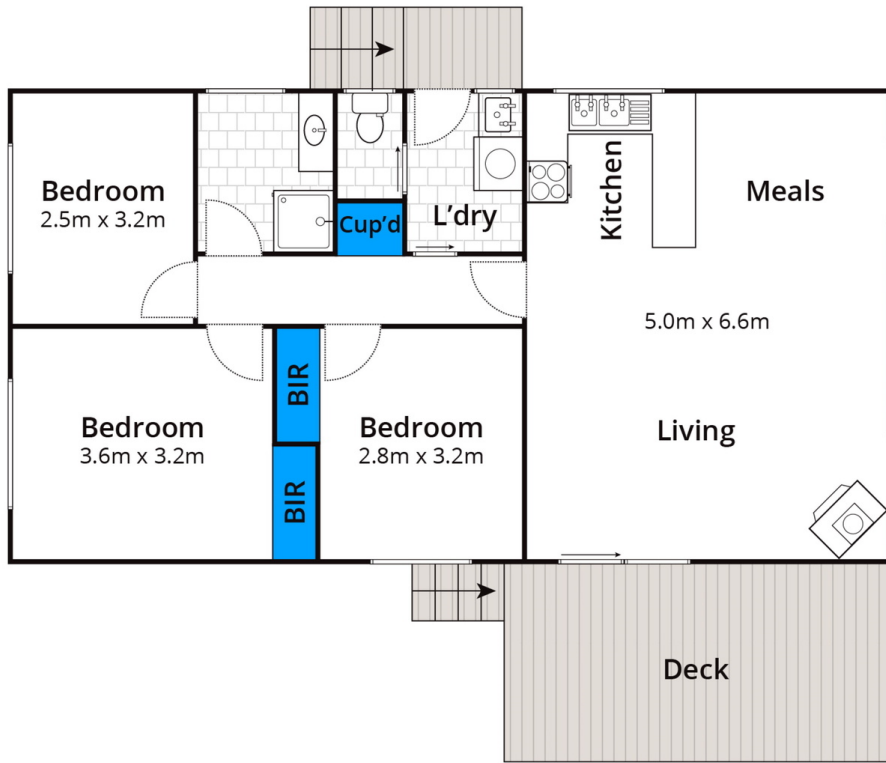


Michelle Mc Donald
03 5263 1100

[For full version visit the website](https://www.greatoceanproperties.com.au)

<https://www.greatoceanproperties.com.au>

5220 0000



Approx House Area 79m²

Whilst bwrn.com.au has made every attempt to ensure the accuracy of the floor plan contained here, measurements are approximate and no responsibility is taken for any error, omission, or mis-statement. This plan is for illustrative purposes only.

18 Chatswood Drive, Anglesea

