



### 39 Belton Street ANGLESEA VIC

4 2 4

Positioned perfectly amongst the trees, this Belton Street beach house captures a beautiful native outlook across the treetops with views to Pt Addis and beyond. Watch the ever-changing panorama unfold from this elevated northerly position. With its abundance of natural light and framed by glass to capture the views, the spacious upstairs open plan living, dining and kitchen with its second living area encourages an easy flow through to the expansive sunny decks and the covered entertaining area, perfect for indoor/outdoor living and that relaxed coastal lifestyle. This two-storey beach house comprises of three bedrooms on the upper level with a fully self-contained studio on the lower level and ample storage and space and workshop to accommodate friends and family. Positioned on a large 1475 sqm (app) elevated allotment,

**Type** : House  
**Price** : \$ 806,000  
**Land Size** : 1475 sqm  
**View** : <https://www.greatoceanproperties.com.au/5394615>

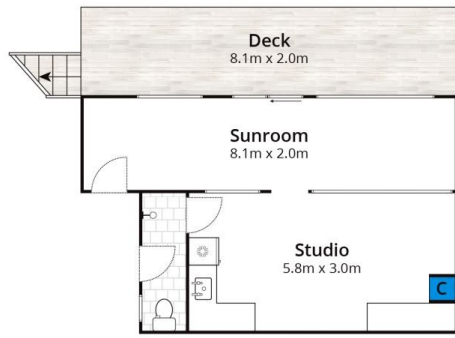


**Marty Maher**  
0352200000

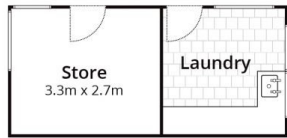
[For full version visit the website](https://www.greatoceanproperties.com.au)

<https://www.greatoceanproperties.com.au>

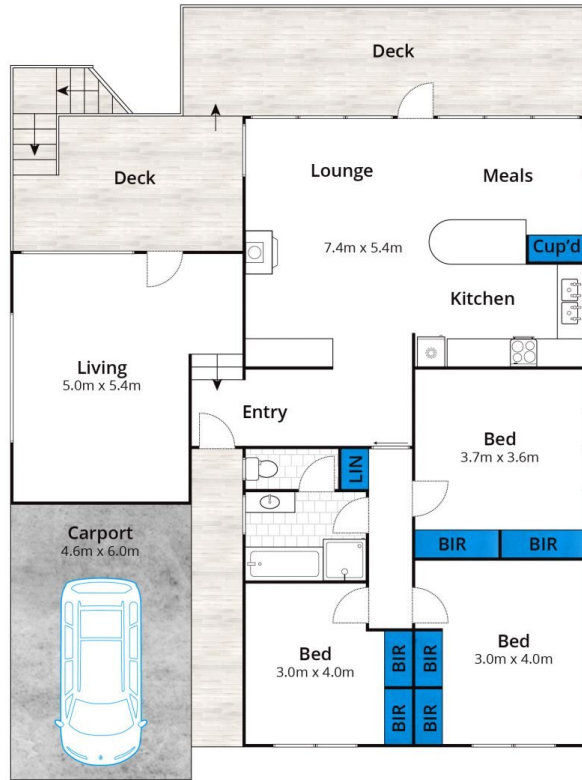
5220 0000



Lower Level



(Not In Position)



Upper Level

Approx House Area 166m<sup>2</sup>

Whilst [bwrn.com.au](http://bwrn.com.au) has made every attempt to ensure the accuracy of the floor plan contained here, measurements are approximate and no responsibility is taken for any error, omission, or mis-statement. This plan is for illustrative purposes only.

## 39 Belton Street, Anglesea

